

# IDENTITY WITH LIGHT

A room is like a stage. If you see it without lighting, it can be the coldest place in the world, yet even the most discreet of lights can bring it to life. Light is revealed to the human eye through interactions with surfaces, objects and the interplay of light and shadow.

## the company

DIB Lighting is a young and dynamic lighting design consultancy based in UAE, Kuwait and Lebanon.

We're a group of lighting designers, product designers and electrical engineers who work together to create the best architectural lighting solutions for each project by bouncing ideas off each other and working with a collaborative spirit. Our projects range from residential, retail, urban development projects to F&B complexes and tower facades.

We approach each task from conception through completion with a sense of curiosity and a desire to design creative, unique yet functional lighting solutions that would exceed our clients' expectations.

## the process



### 1. preparation & brief



### 2. concept design



### 3. developed design



### 4. technical design

This is where we brainstorm as a team alongside the client in order to gain an understanding of the project and develop our pre-concept

The outcome of the preliminary thinking process expanded further through analysis and diagrams to yield a creative lighting concept

During the design development stage the concept is brought to life and processed into a buildable design that fits the project's budget

By coordinating with the different practices working on the project, we issue a comprehensive package of drawings, specifications and documents for construction



**Title of work:** First Avenue Commercial Complex  
**Type of space:** Retail Mall  
**Location of work:** Al Ain, UAE  
**Year:** 2018  
**Scope:** Interior, Landscape and Façade Lighting  
**Consultant:** ACG



inspiration



concept

**The Lighting Concept:**

While going up the Hafeet Mountain Road, the topography and the outline of the road structures and shapes the visitors' experience.  
Based on this, we have built our lighting design concept:

**The Floating Canopy:**

Hanging above the central spine and the main drop off areas of the complex, is a floating structure that follows a similar outline of the Hafeet mountain road, adding vibrancy yet functional lighting to the project.



concept sketch





**Title of work:** First Avenue Commercial Complex  
**Type of space:** Retail Mall  
**Location of work:** Al Ain, UAE  
**Year:** 2018  
**Scope:** Interior, Landscape and Façade Lighting  
**Consultant:** ACG

**The Floating Canopy:**

A hexagonal shaped floating canopy structure would spread along the central spine of the complex projecting patterns during the day when exposed to sunlight.

The floating canopy is then lit at night using a series of hidden RGB lights that would make the project vibrant from within while people are walking there, and colorful from afar (mountain top) as well, since the light would shine out.

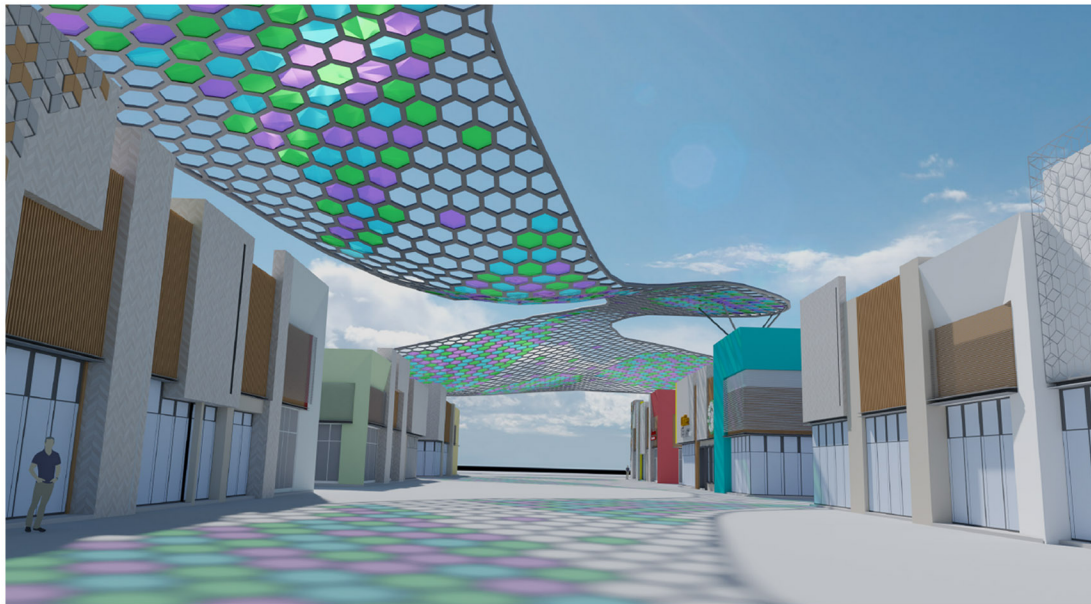
By adding a layer of dichroic glass filters to the metal structure we maximize the entertainment factor along the commercial complex and promote the experience of the visitors.



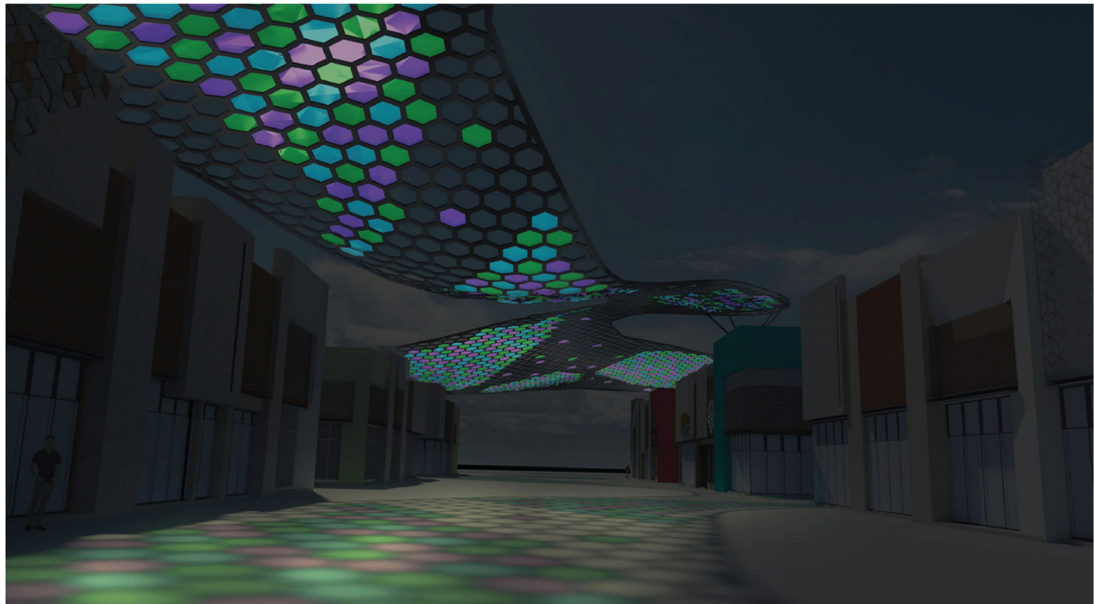
dichroic glass reference



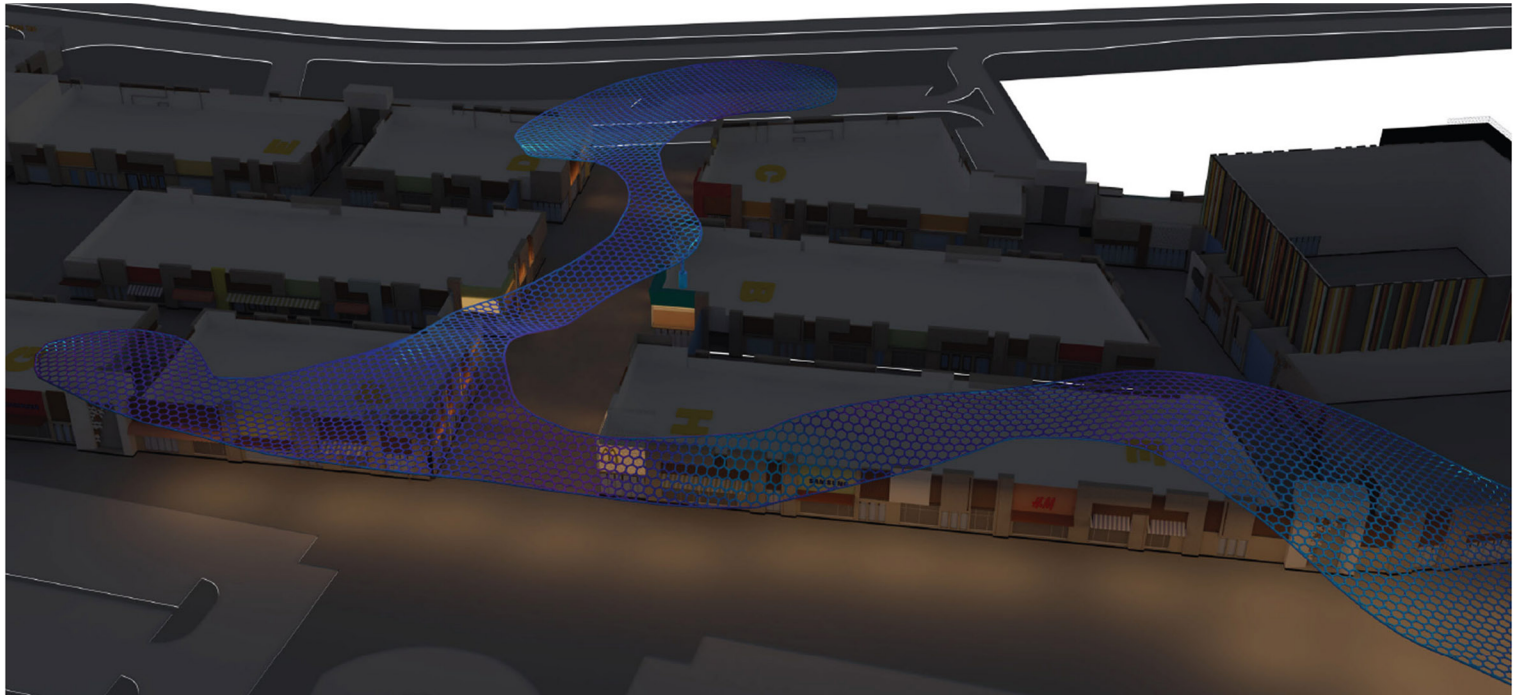
moodboard



conceptual renders: floating canopy with dichroic glass filters



conceptual renders: floating canopy





**Title of work:** First Avenue Commercial Complex  
**Type of space:** Retail Mall  
**Location of work:** Al Ain, UAE  
**Year:** 2018  
**Scope:** Interior, Landscape and Façade Lighting  
**Consultant:** ACG

**Façade Lighting:**  
- Louvers: would be lit from the inside to promote the depth in the facades and accentuate the verticality.  
- Hexagonal Meshes: would be backlit to make the back layers of the facade pop out.

- Vertical slits: would glow from within as if a ray of light is being captivated within the slit itself.  
- Green wall: would be lit by grazing it with light, while also adding points of light inside the greenery to make it glitter.



louvers



hexagonal meshes



vertical slits



green wall



conceptual render



**Title of work:** First Avenue Commercial Complex  
**Type of space:** Retail Mall  
**Location of work:** Al Ain, UAE  
**Year:** 2018  
**Scope:** Interior, Landscape and Façade Lighting  
**Consultant:** ACG

**Landscape Lighting:**

- Central spine: the water splashes would glow in colors as if the floating hexagonal mesh's reflections are absorbed by the water jets. The palm trees, trees, and benches would glow respectively using uplights and hidden linear light sources.
- Amphitheater: the steps would float due to hidden light sources, in addition to pen-sized copper light spikes that would make the shrubs glow. Tree uplights would highlight the tree trunks, and glowing gravel would imitate the starry sky.
- Food truck area: the trunks of the palm trees in the food trucks area will be used as poles to hold a light, festive yet functional catenary sparkles illuminating the area in addition to glowing benches and tree uplights.



central spine



amphitheater



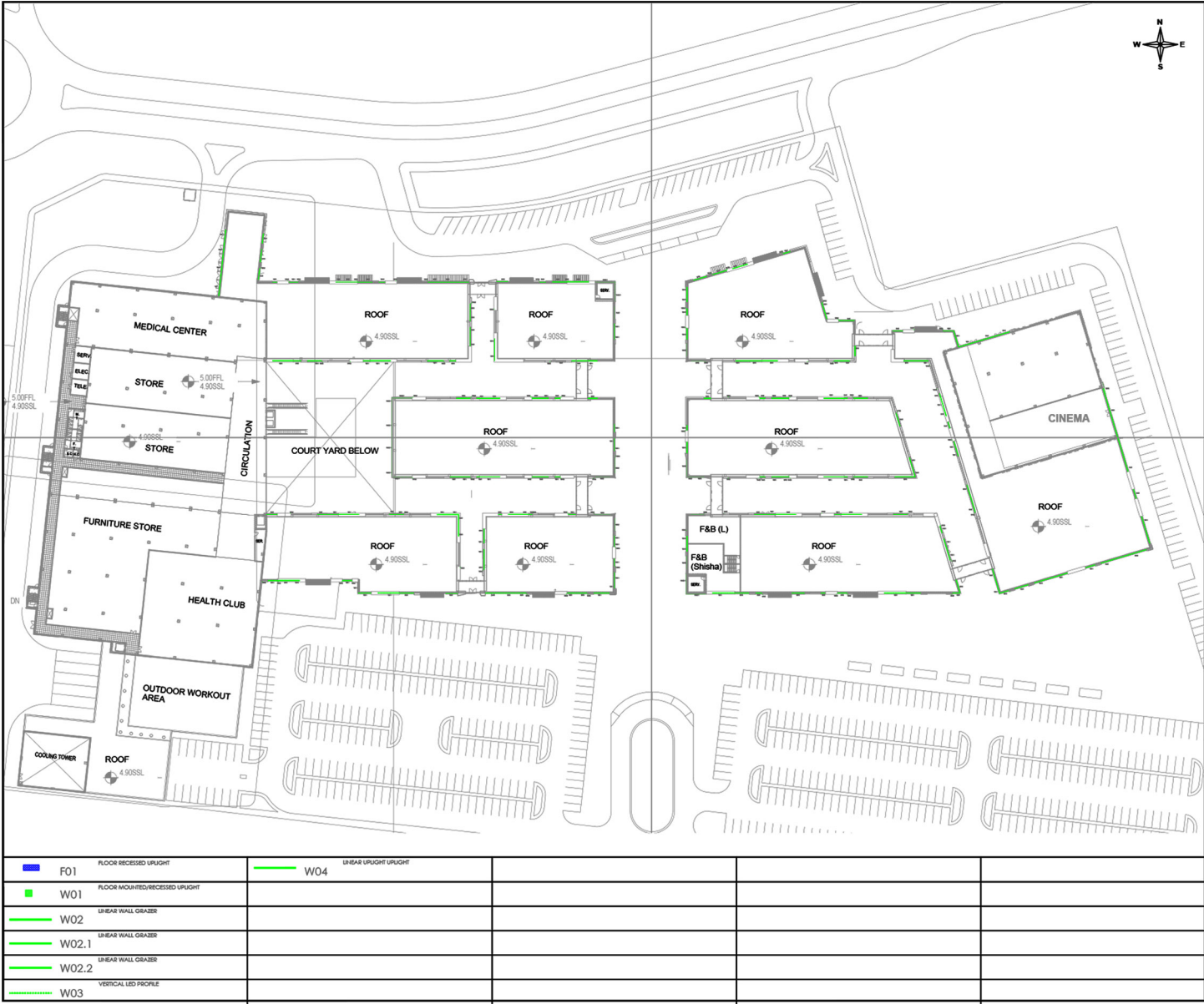
food truck area



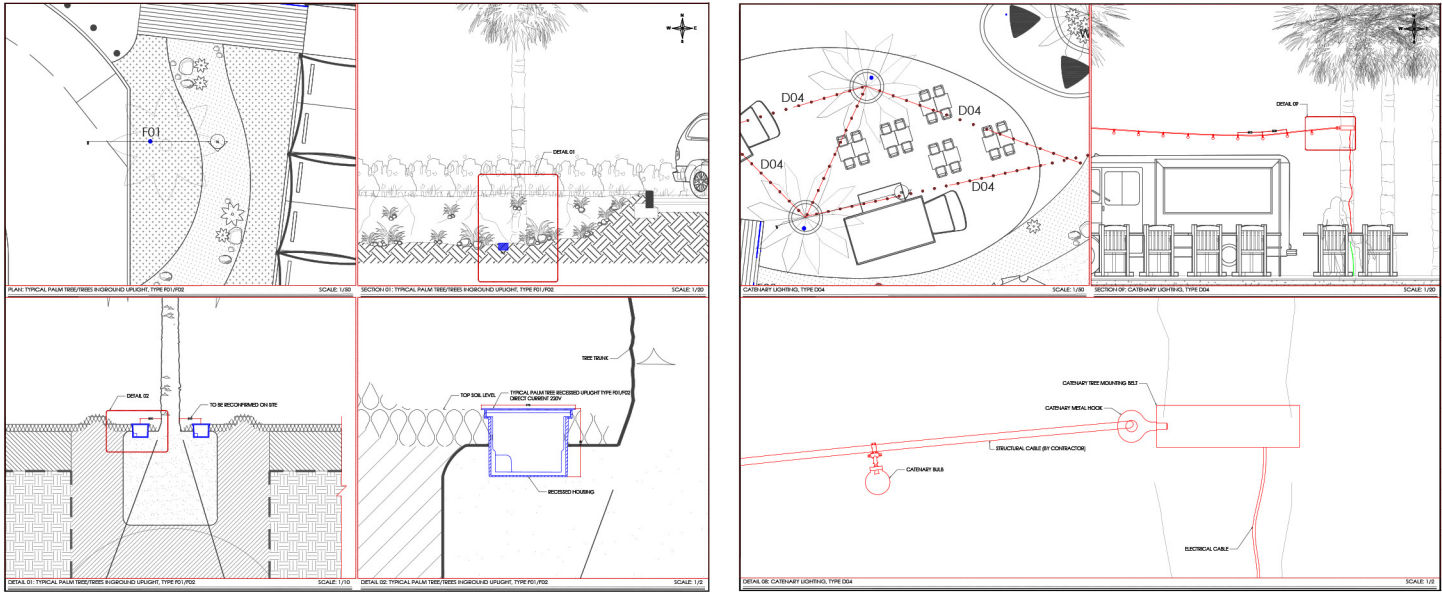
conceptual renders



**Title of work:** First Avenue Commercial Complex  
**Type of space:** Retail Mall  
**Location of work:** Al Ain, UAE  
**Year:** 2018  
**Scope:** Interior, Landscape and Façade Lighting  
**Consultant:** ACG

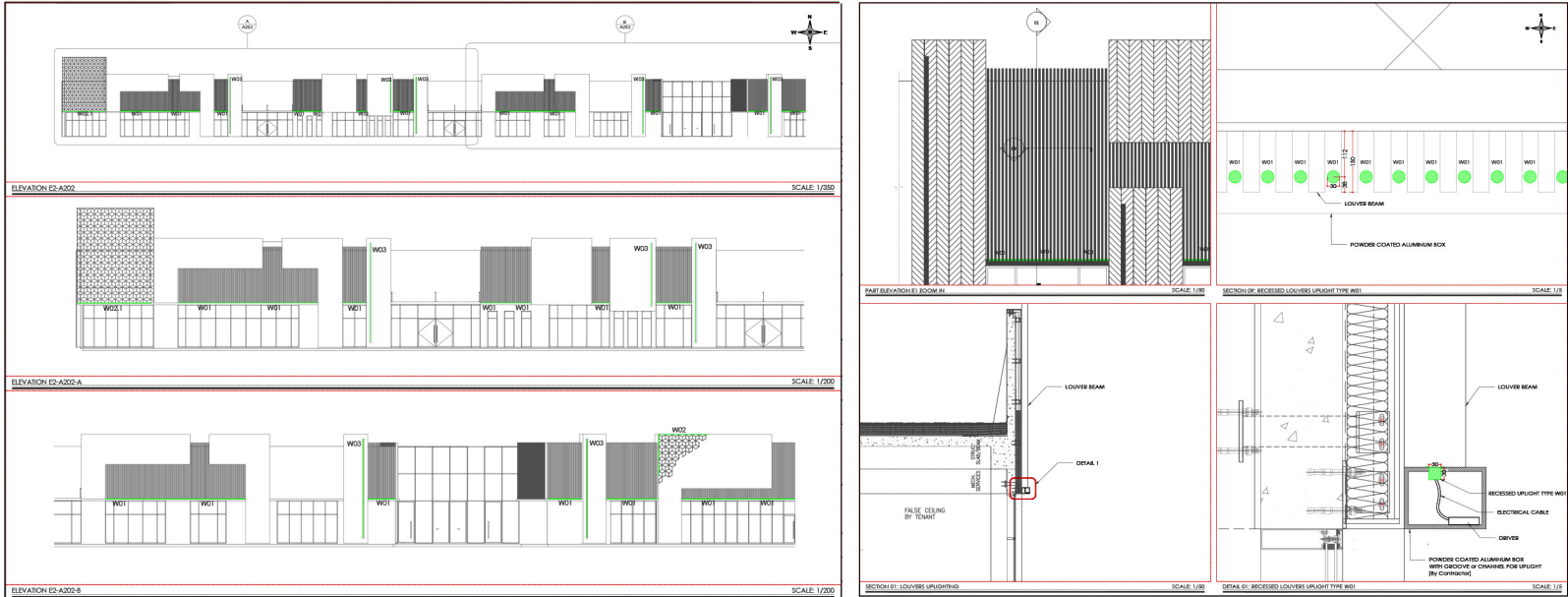


facade lighting layout



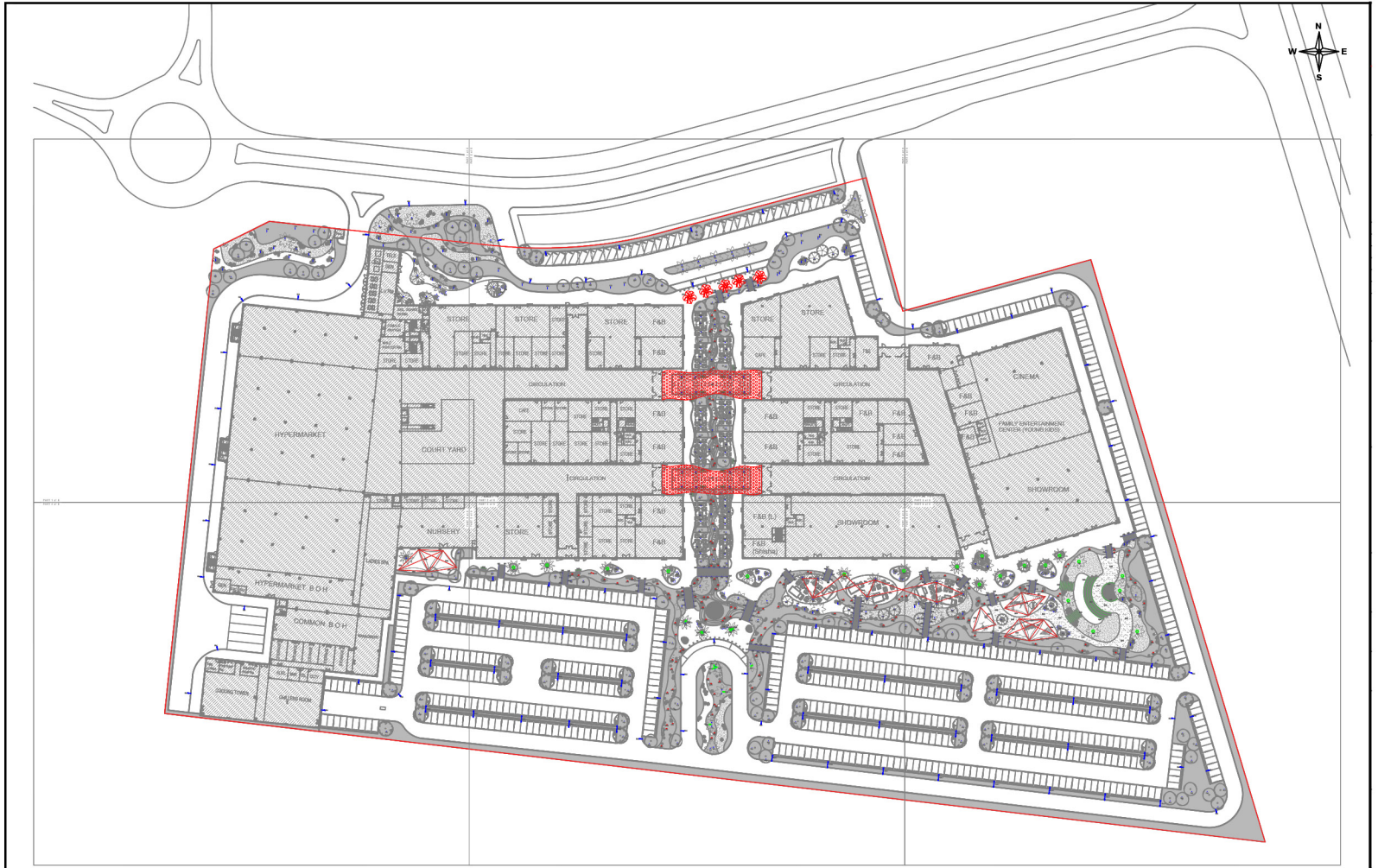
landscape lighting details

**Schematic Lighting Layouts:**  
- Facade + details  
- Landscape + details



facade elevations

facade lighting details

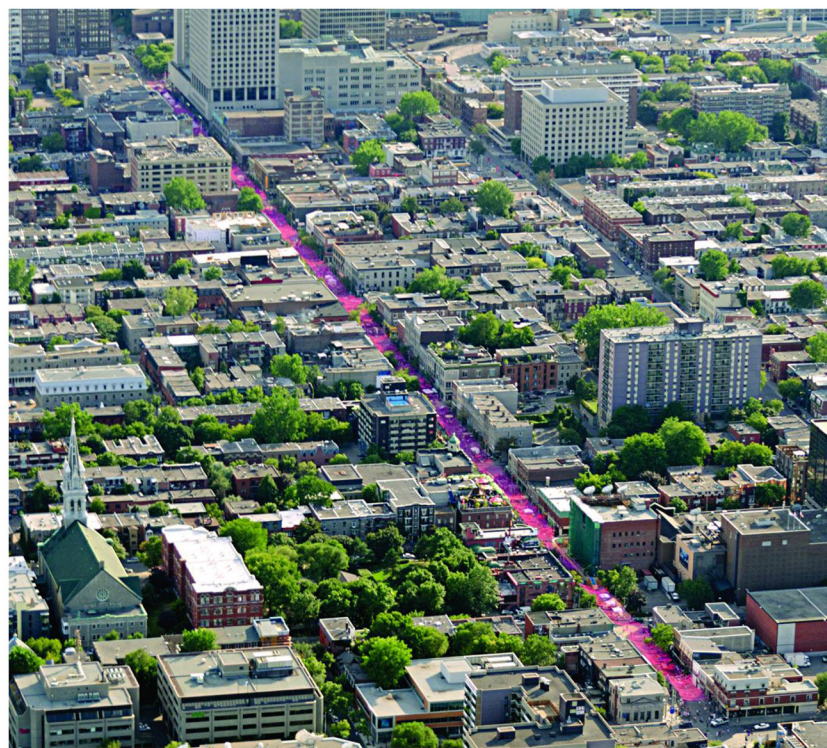


F01 Palm Tree Uplight	F05 Small Trees Uplight	IL02 Under Benches Linear Lighting	D02 Dichroic Shading Structures with Incorporated Lights	
F02 Big Trees Uplight	F06 Tiny Inground Uplight for Benches	IL03 Under Steps Linear Lighting	D03 Glowing Rocks	
F03 Fern Shrub Light	F07 Restaurants Small Pole	W01 Palm Tree Ring	D04 Canopy Lighting	
F04 Single Head Lighting Pole	F08 Recessed Deck Step Lights	PR01 Gobo Projector	D05 Glowing Gravel	
F04.1 Double Head Lighting Pole	IL01 Under Deck Linear Lighting	D01 Flooring Hexagonal Installation with LED Dots		

landscape lighting layout



**Title of work:** Al Andalus  
**Type of space:** Mixed Use Complex  
**Location of work:** Kuwait  
**Year:** 2018  
**Scope:** Interior, Landscape and Façade Lighting  
**Consultant:** SSH International Consultants



inspiration



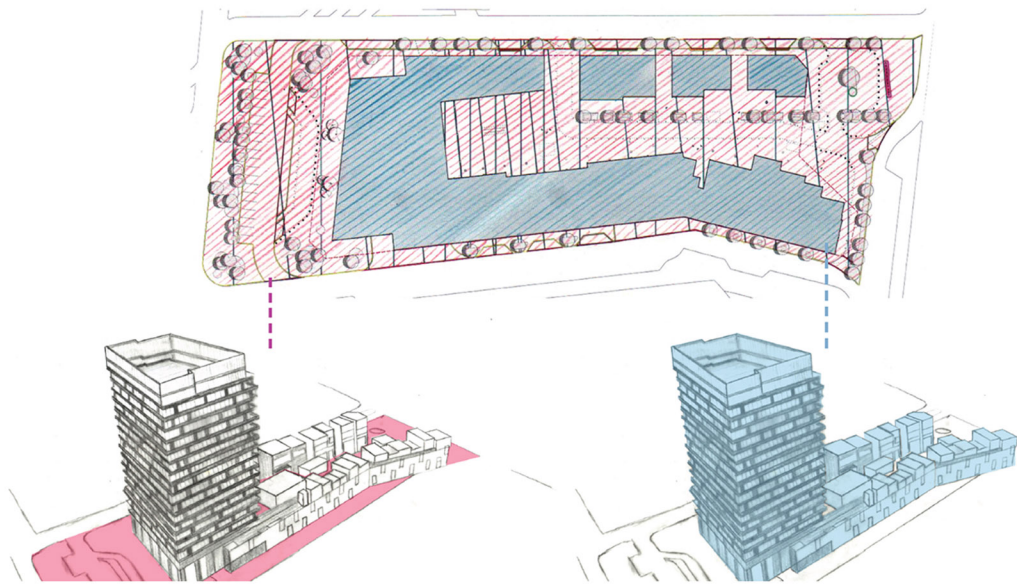
concept



**The Lighting Concept:**

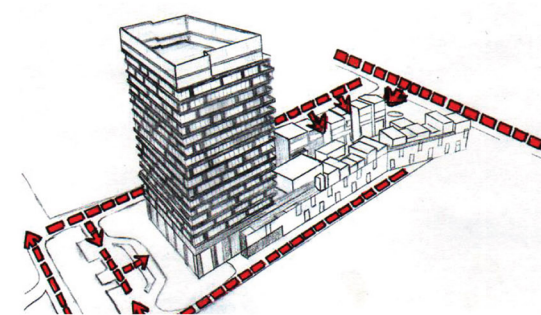
More than 170,000 pink balls suspended high in the air along Montreal's Sainte-Catherine Street transforms it for the summer into a pedestrian mall. The installation has been deployed in nine sections, each section displaying its own unique pattern. The result is a range of spirited motifs, some dense, others open and airy, all reflecting the street's many moods.

The space follows an inclined circulation axe similar to a circuit which is more interesting to discover bit by bit rather than having everything revealed all at once. Our objective is to give a unique dramatic experience to visitors creating a scenography in the space that will transform a flat image into a livelier piece of art. The smart use of light and shadow will allow us to transform the circuit into different sequences where elements will appear and others disappear.

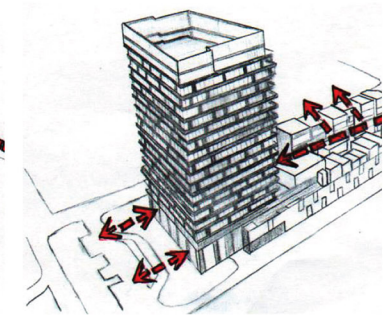


The Landscape and Outdoor spaces

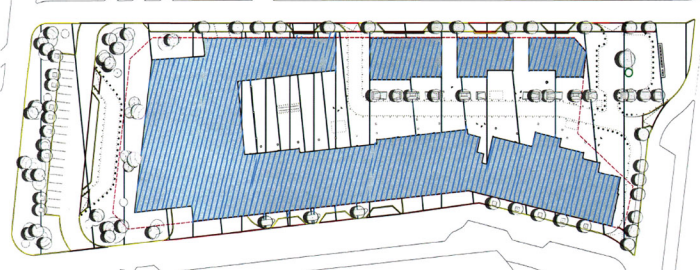
The Facades



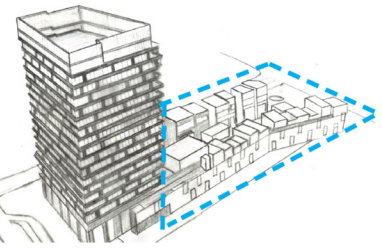
The Surrounding circulation and Access Points



The Internal Circulation



The Tower



The Retail and F&B Strip

analysis:

landscape & circulation

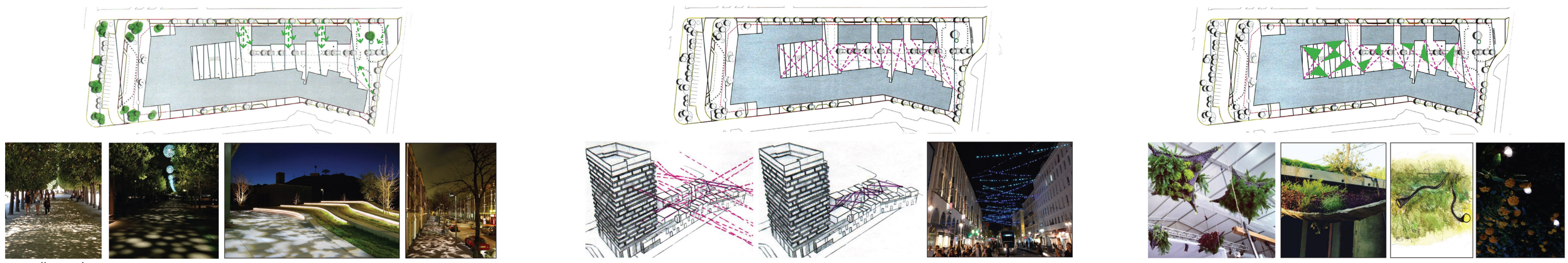
facade



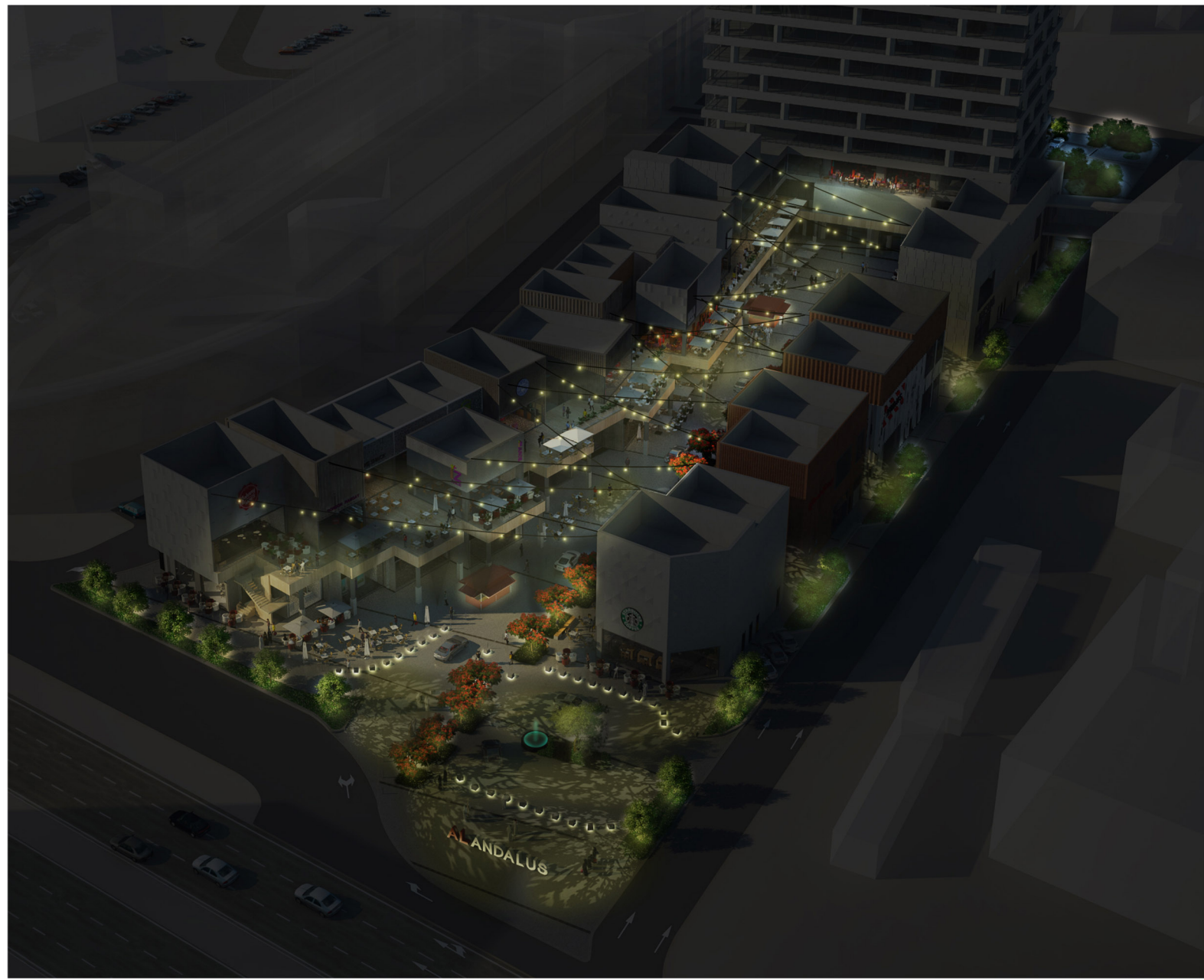
**Title of work:** Al Andalus  
**Type of space:** Mixed Use Complex  
**Location of work:** Kuwait  
**Year:** 2018  
**Scope:** Interior, Landscape and Façade Lighting  
**Consultant:** SSH International Consultants

**Landscape Lighting:**

- Entrances: Gobo projections will imitate the effect of the moonlight when hitting the trees defining the entrances and giving a dramatic look to the area
- Catenary system: From the architectural axes, a network of sparkles is derived adding a layer of functional and mood lighting at once in addition to connecting the areas.
- Floating Green shades: Above the catenary, a green mesh will be hung providing a cooling effect in addition to a reflective surface for the catenary's sparkles below



moodboards



renders





**Title of work:** Al Andalus  
**Type of space:** Mixed Use Complex  
**Location of work:** Kuwait  
**Year:** 2018  
**Scope:** Interior, Landscape and Façade Lighting  
**Consultant:** SSH International Consultants

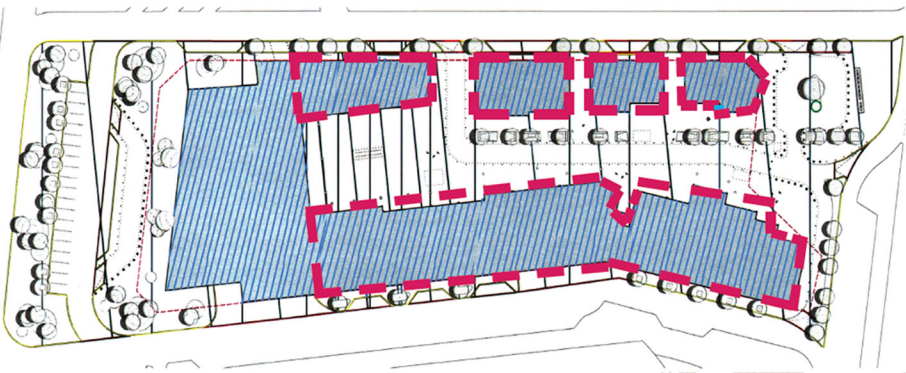
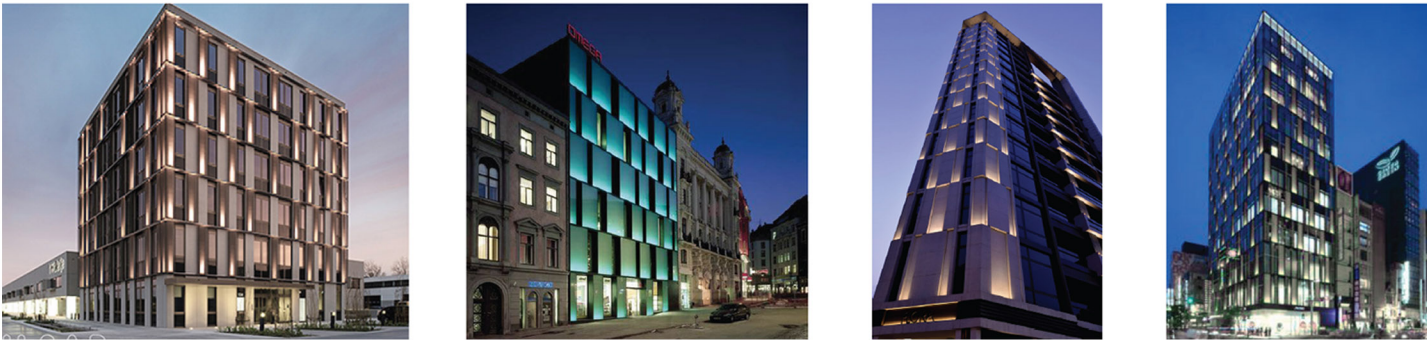
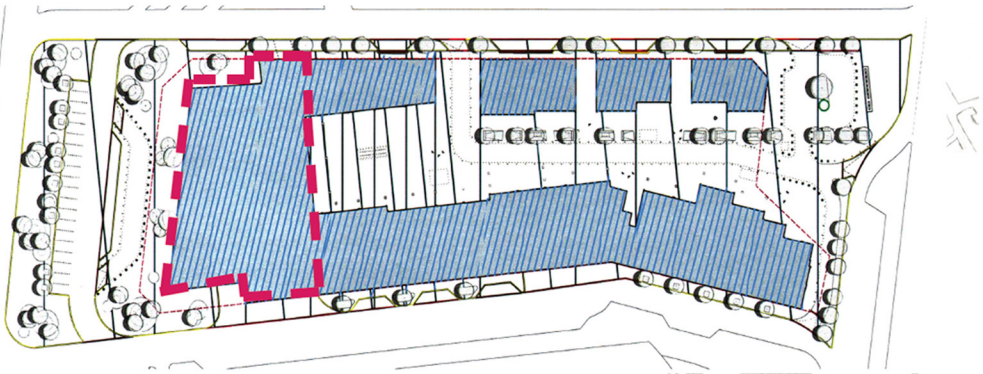
**Facade Lighting:**

The overall scheme will slide on the facade's panels and inside the reception of the building as if floating particles invaded the space. The motion mapped in the outdoor spaces is going to be translated on the main facade's panels through a lighting scheme that can imitate motion even if the light is still.

- The Tower: Making a relation between the vertical façade skin and the horizontal public area by highlighting the edges of the architectural building volume to create a continuous flow between the passage and the facade.



concept



moodboard

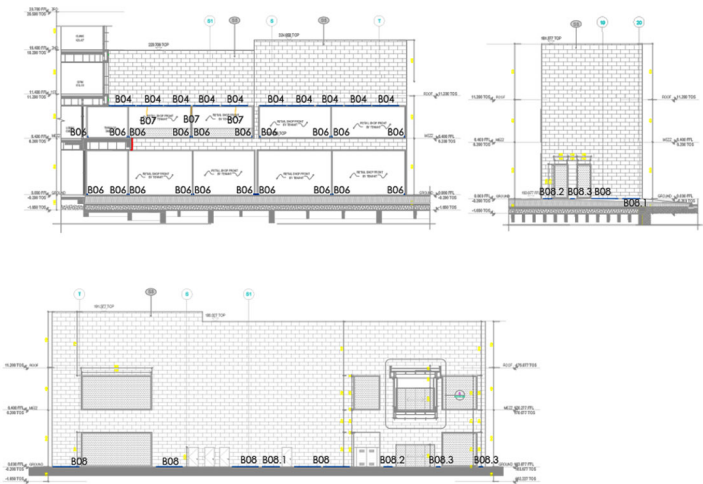


renders

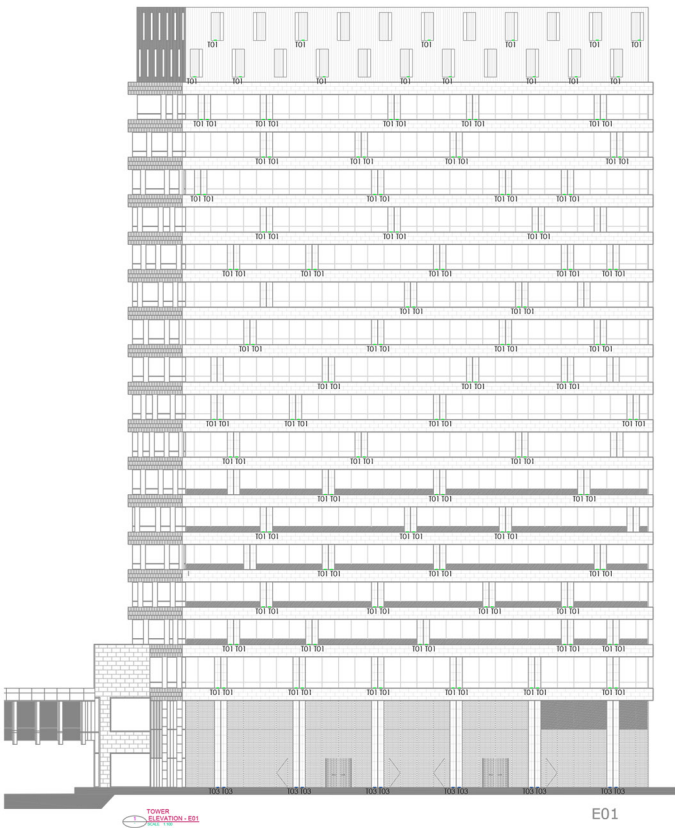


**Title of work:** Al Andalus  
**Type of space:** Mixed Use Complex  
**Location of work:** Kuwait  
**Year:** 2018  
**Scope:** Interior, Landscape and Façade Lighting  
**Consultant:** SSH International Consultants

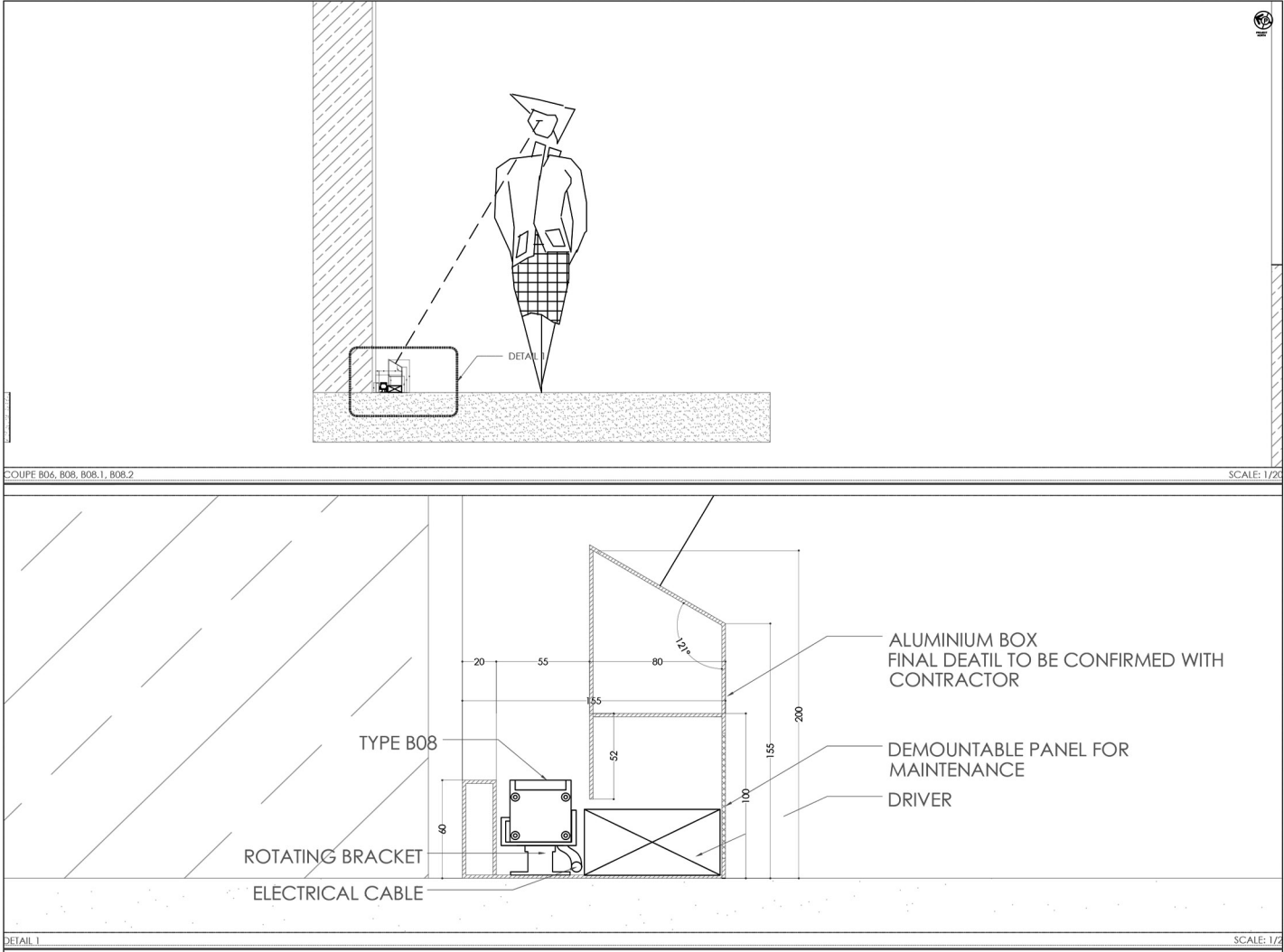
**Schematic Lighting Layouts:**  
- Landscape + details  
- Facade + details



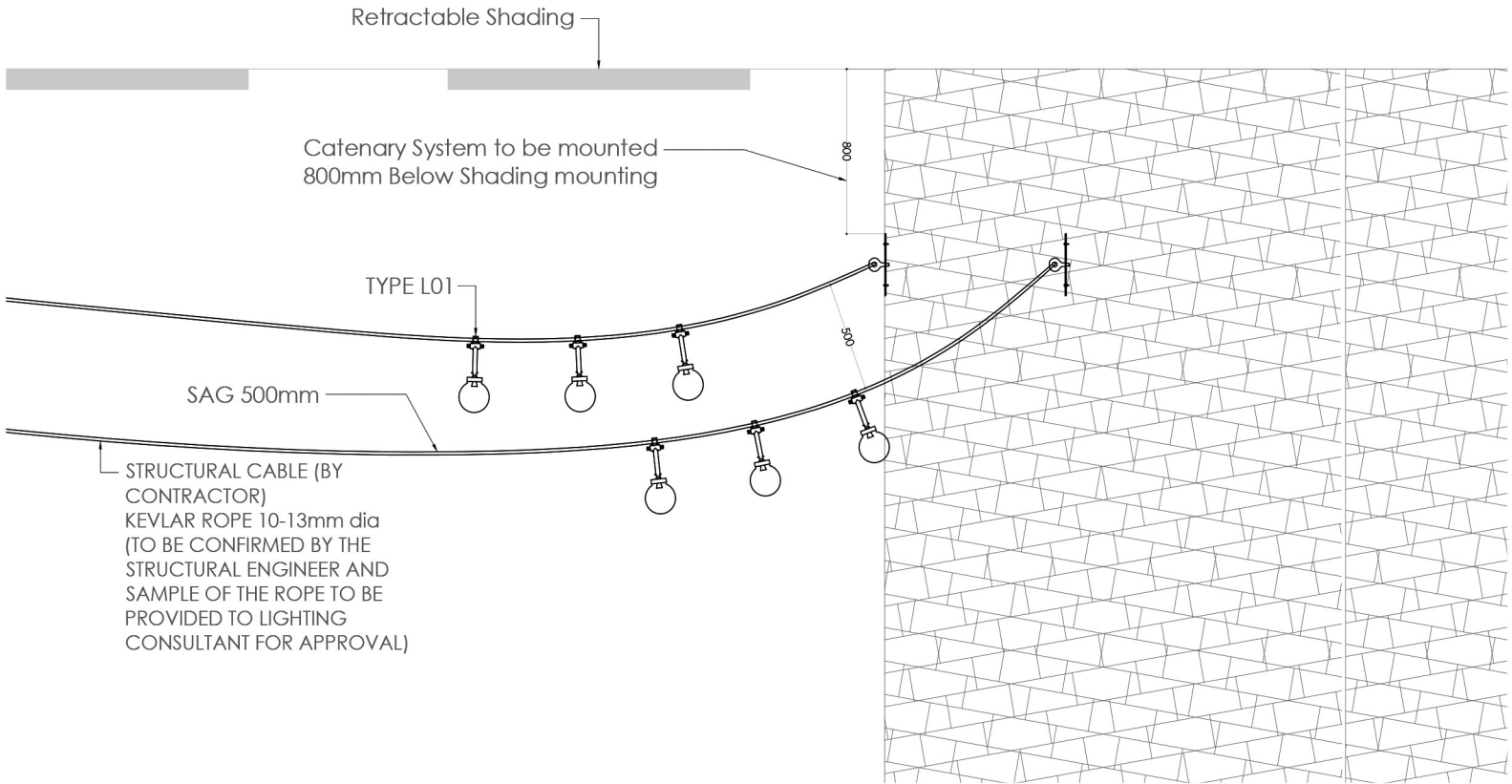
facade lighting elevations



landscape lighting layout



facade lighting detail



landscape lighting detail



**Title of work:** The Oranger Hotel  
**Type of space:** Resort  
**Location of work:** Tunisia  
**Year:** 2019  
**Scope:** Landscape and Façade Lighting  
**Consultant:** ADP



inspiration

**The Lighting Concept:**

During the Renaissance period designs were mainly based on symmetry and the principle of imposing order and harmony on nature. It was characterized by planting beds created in geometric shapes and symmetrical patterns, the use of water bodies to animate the garden, stairways and terraces to unite different levels, and focal points.

The main axis of symmetry splits the space visually, orienting one's eyes towards the central focal point, the lateral secondary axis provide different experiences along the way to the end of the main axis, and the geometrical forms create different functions in the space.

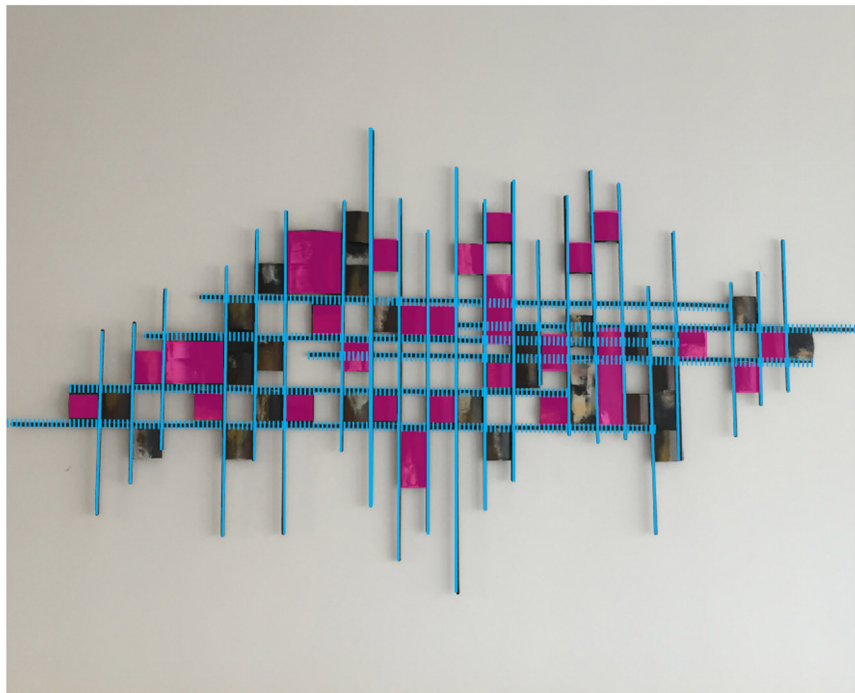
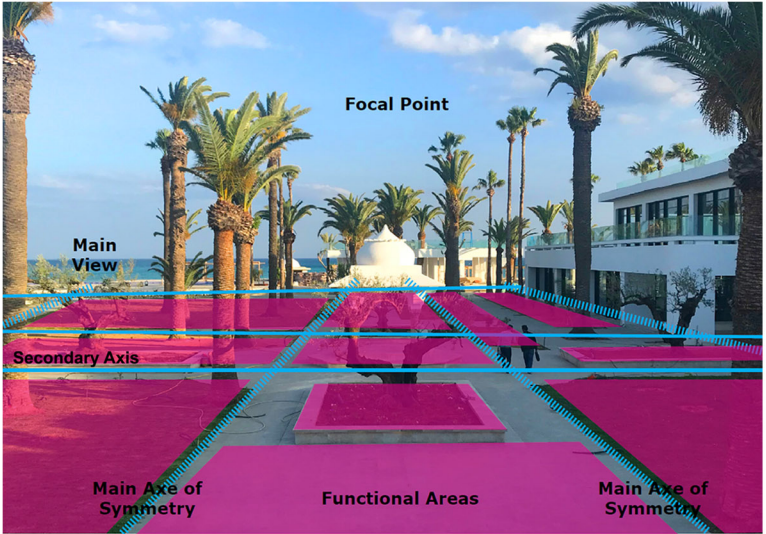
Applying the same concept to The Orangers, the primary axis of symmetry extends from the entrance's stairs all the way towards the sand of the beach making the focal point nothing but the beach itself. The secondary axis splits the space in several zones offering different functionalities on the way down towards the sea.

Inspired by the art installation of the Orangers Hotels, the same principals of geometry and functions can be applied, where a series of axis form the basics of the design and from which light would glow similar to Twinkling Lanterns.

Flying lanterns illuminate the sky. After illuminating the sky, the glowing lanterns rest on the trees, on the ground, and on the sand. A series of tree pendant lanterns will introduce the guests to the feature lanterns' installation to follow.



concept

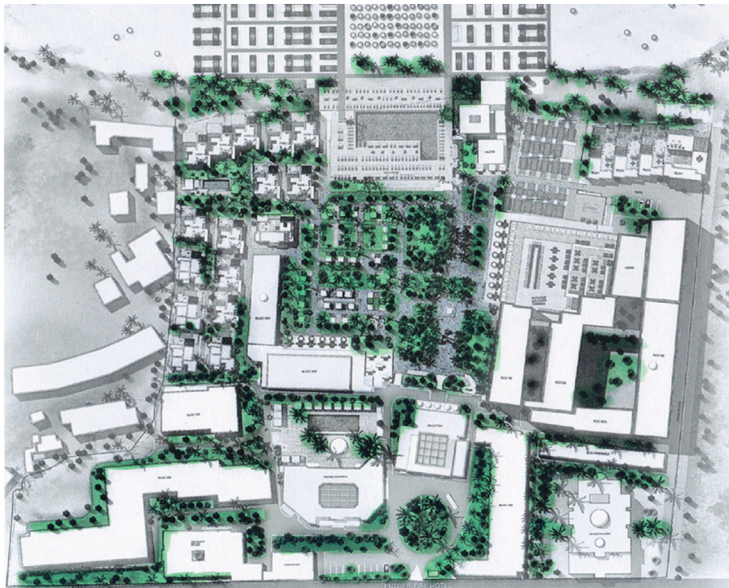


concept

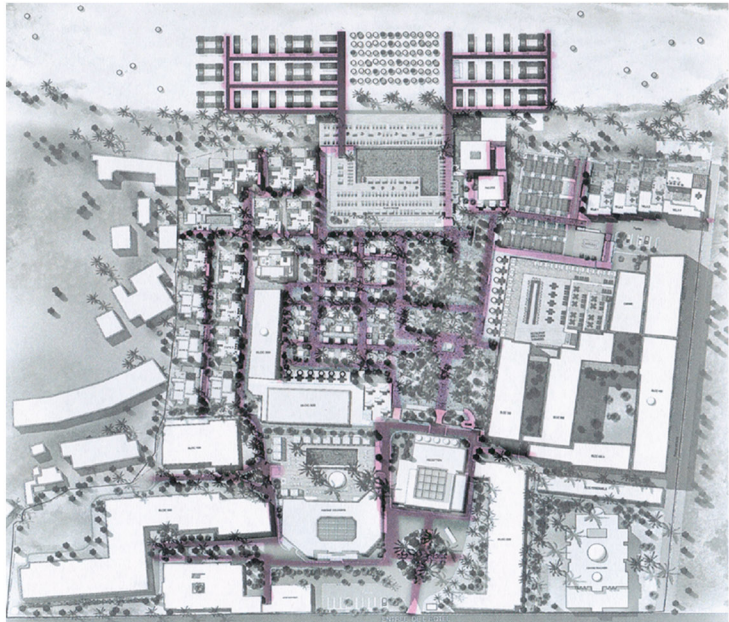




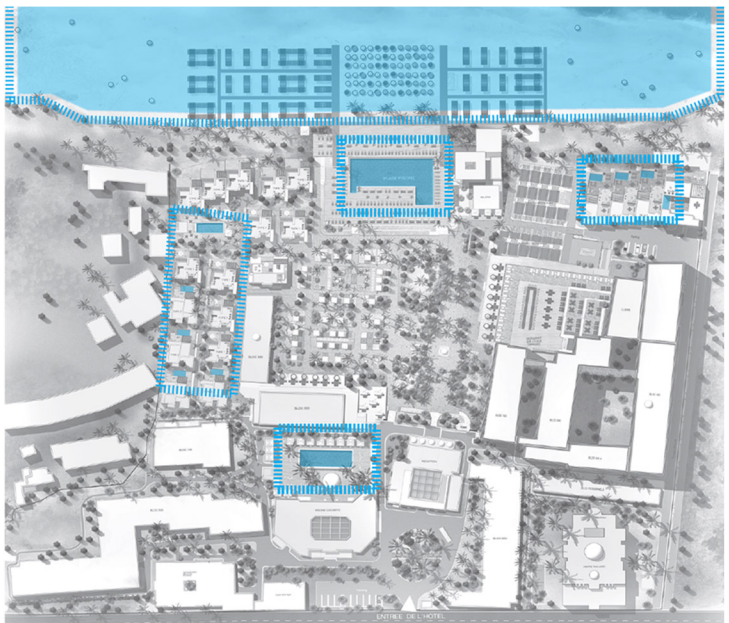
**Title of work:** The Oranger Hotel  
**Type of space:** Resort  
**Location of work:** Tunisia  
**Year:** 2019  
**Scope:** Landscape and Façade Lighting  
**Consultant:** ADP



softscape



circulation



pool & beach

analysis



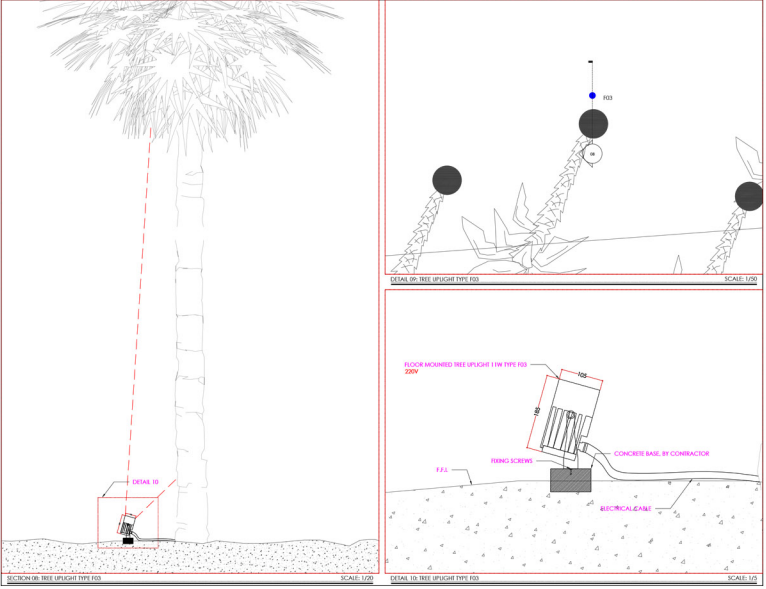
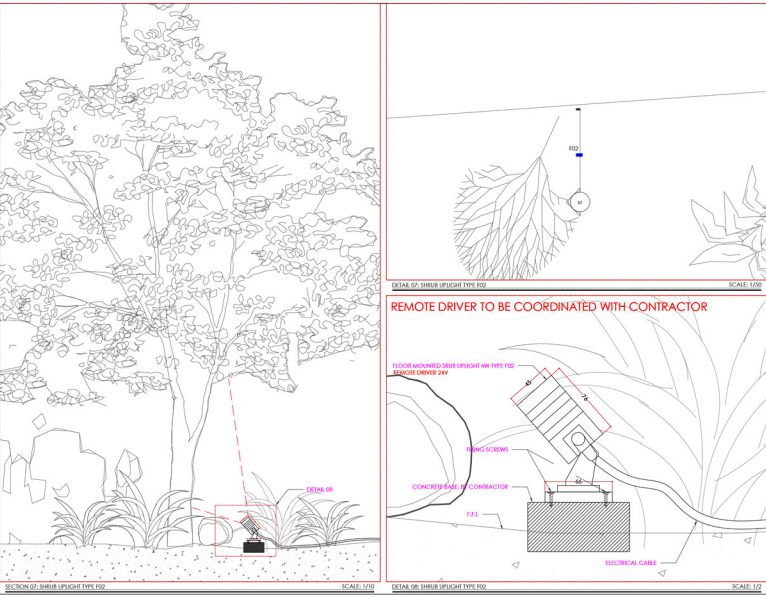
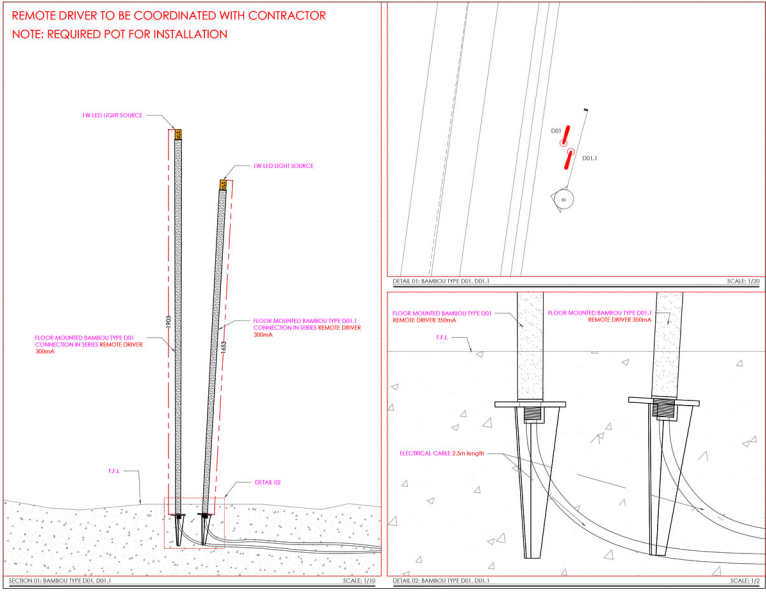
render



Title of work: The Oranger Hotel  
Type of space: Resort  
Location of work: Tunisia  
Year: 2019  
Scope: Landscape and Façade Lighting  
Consultant: ADP

Lighting Layout & Details:

D01	Bambou, cylindrical, mounted, fixed, ambient 1W, IP44, 300mA, remote transformer	D04.1	Clochette, mounted, fixed, ambient, 1W, IP65, 12V, remote transformer	F03	Mounted, fixed, accent, 11W, IP65, uplight, 220V
D01.1	Bambou, cylindrical, mounted, fixed, ambient 1W, IP44, 300mA, remote transformer	D05	Recessed, fixed, ambient, 0.75mm fiber optics	F04	Mounted, fixed, gobo projector, 8W, IP66, 220V
D02	Reeds, cylindrical, mounted, fixed, ambient, 8W, IP68, 300mA, remote transformer	D05.1	Recessed, fixed, ambient, 1.5mm fiber optics	F05	Mounted, fixed, ambient, 1.5W, 12V, floor lantern
D03	Hemiphar, cylindrical, mounted, fixed, ambient, 2W, IP68, 300mA, remote transformer	D05.2	Recessed, fixed, ambient, 2.25mm fiber optics	F06	Mounted, fixed, ambient, 1.5W, 12V, floor lantern
D03.1	Hemiphar, cylindrical, mounted, fixed, ambient, 2W, IP68, 300mA, remote transformer	F01	Mounted, fixed, ambient, 28W, IP65, blue beach projector with 300mA remote transformer	IL04	Linear, strip light, IP68, LED, 10W/m, 3000K, remote transformer
D04	Clochette, mounted, fixed, ambient, 1W, IP65, 12V, remote transformer	F02	Mounted, fixed, ambient, 4W, IP66, uplight, remote transformer		

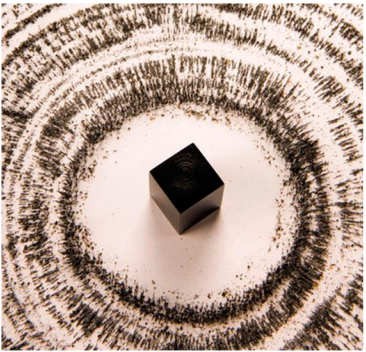




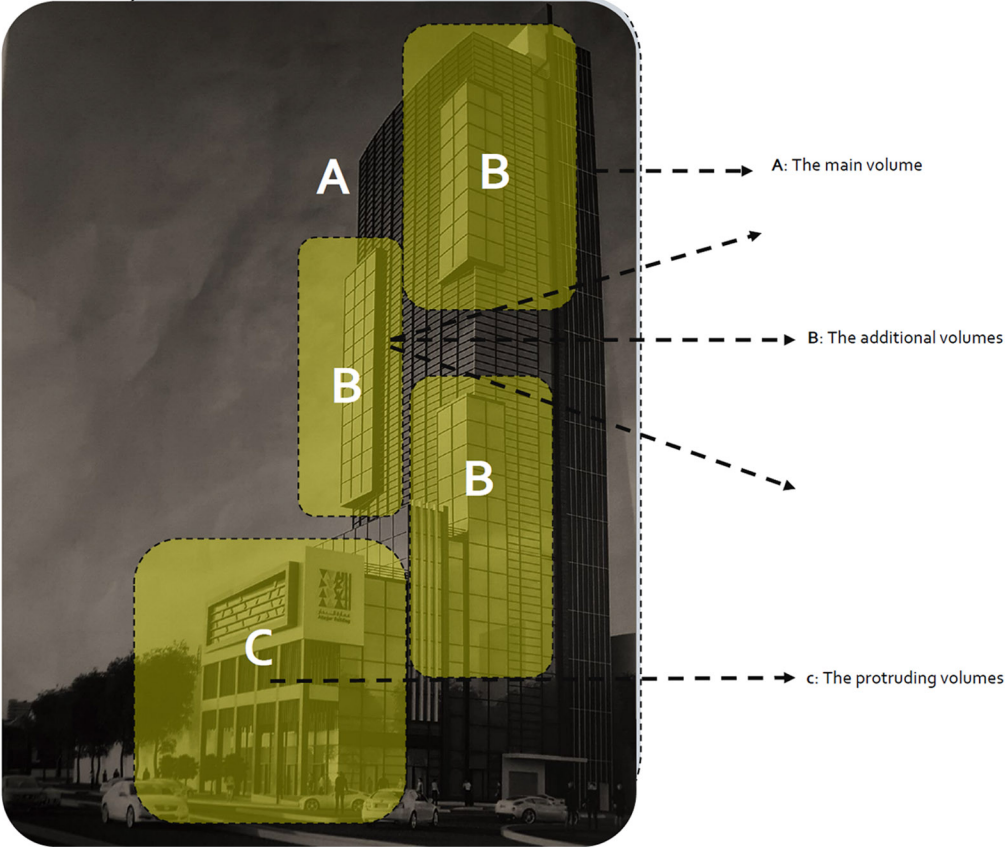
**Title of work:** Tujar Tower  
**Type of space:** Mixed Use Tower  
**Location of work:** Kuwait  
**Year:** 2017  
**Scope:** Façade, Interior and Landscape Lighting  
**Consultant:** Dar Osama Bukhamseen Design

**The Tower Facade- Lighting Concept:**

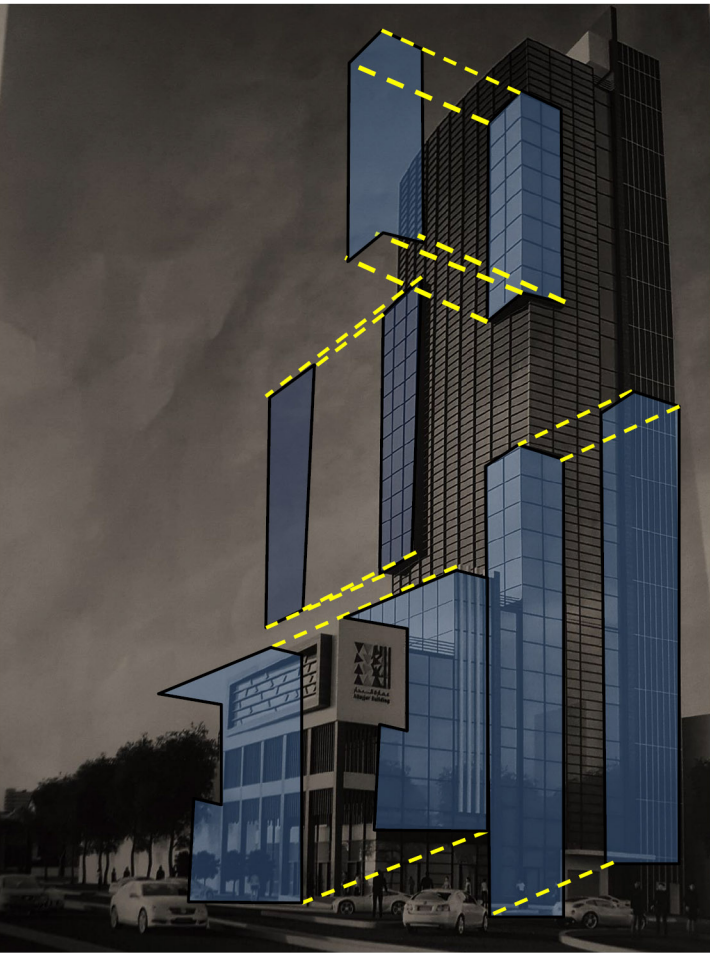
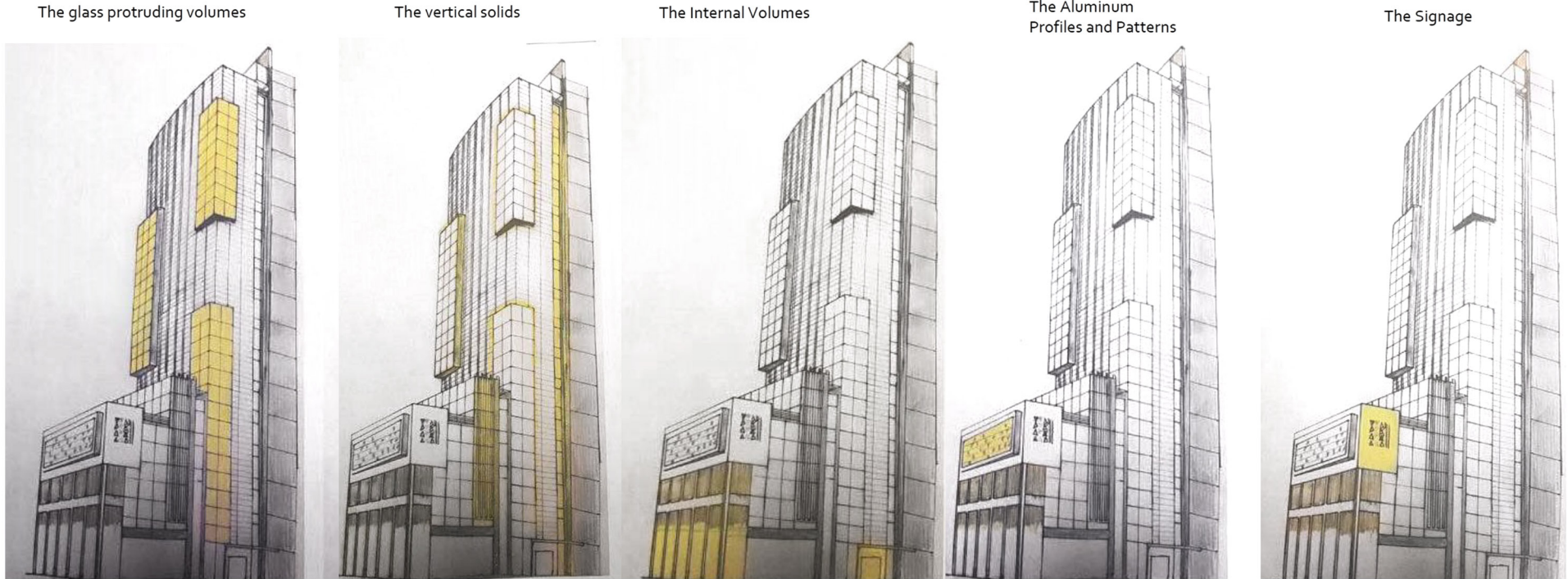
The inspiration for the tower lighting was the magnetic field. By considering the tower to be the center of the force, and the glass volumes as the particles that are attracted to it, we highlight these glass volumes and accentuate them on the facade. As for the sides of the facade, the vertical volume is sliced and an explosion of light is emitted through the defragmentation of the two solid parts.



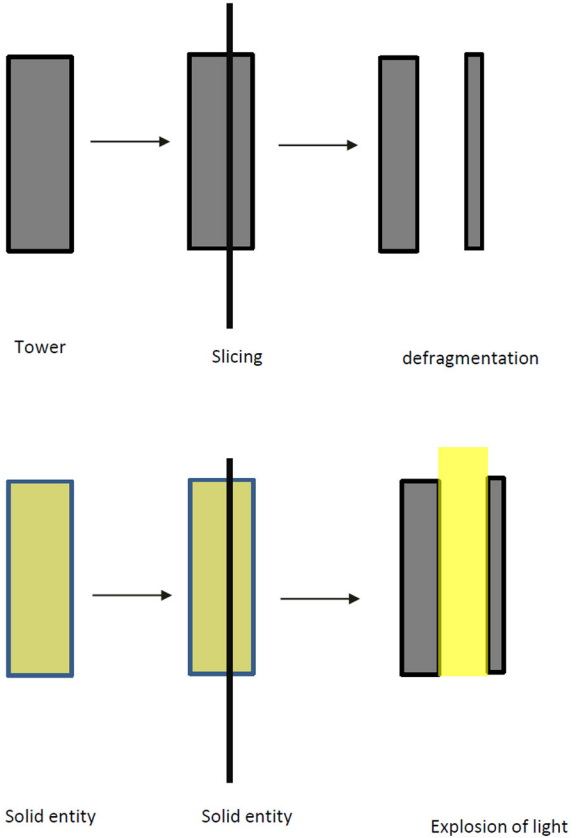
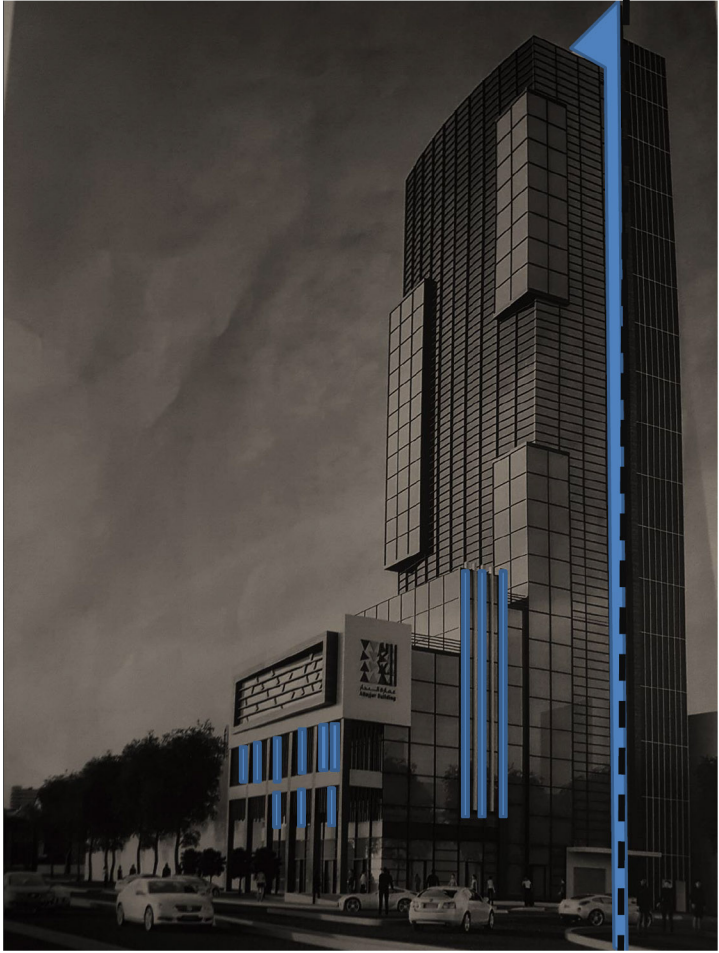
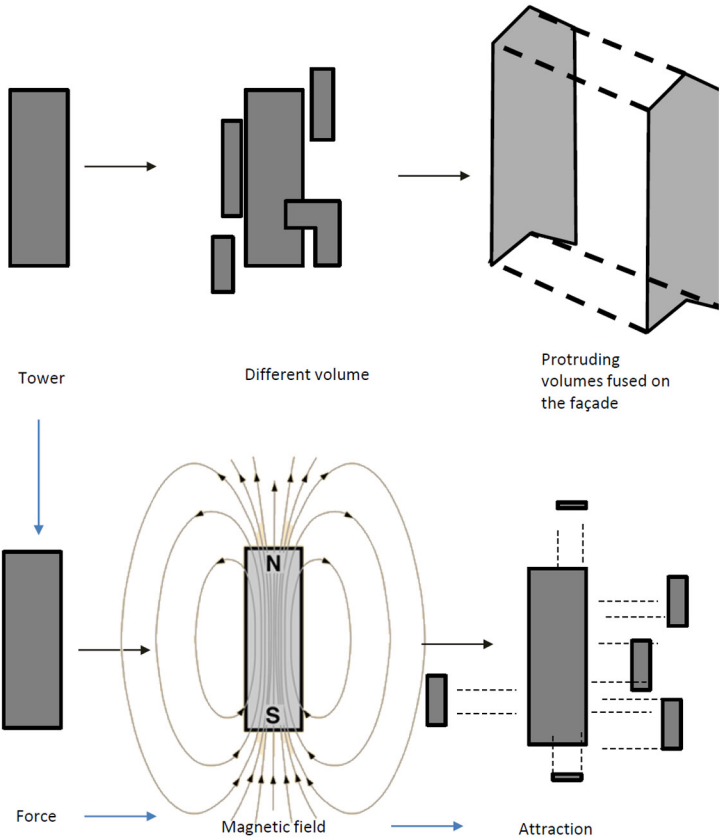
inspiration



analysis

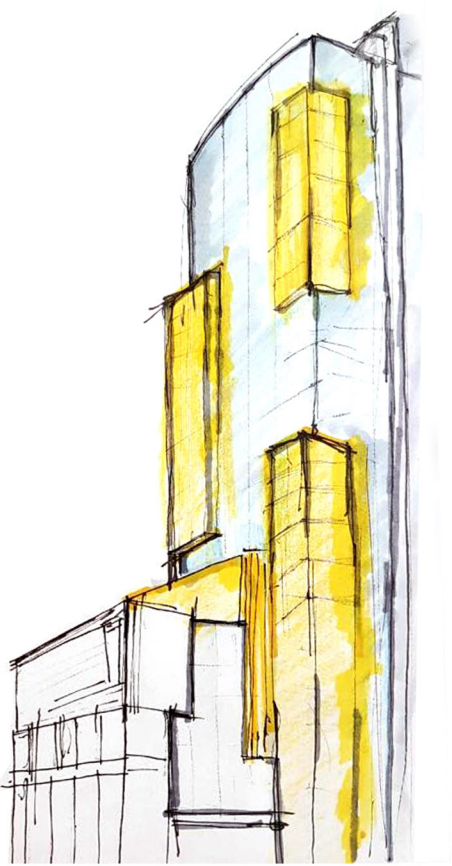


concept





**Title of work:** Tujar Tower  
**Type of space:** Mixed Use Tower  
**Location of work:** Kuwait  
**Year:** 2017  
**Scope:** Façade, Interior and Landscape Lighting  
**Consultant:** Dar Osama Bukhamseen Design



sketch



render



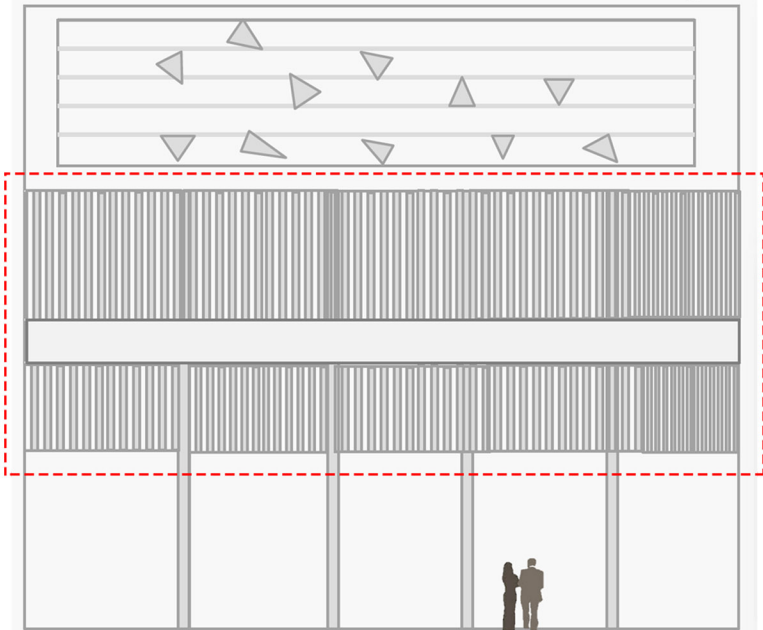
moodboard



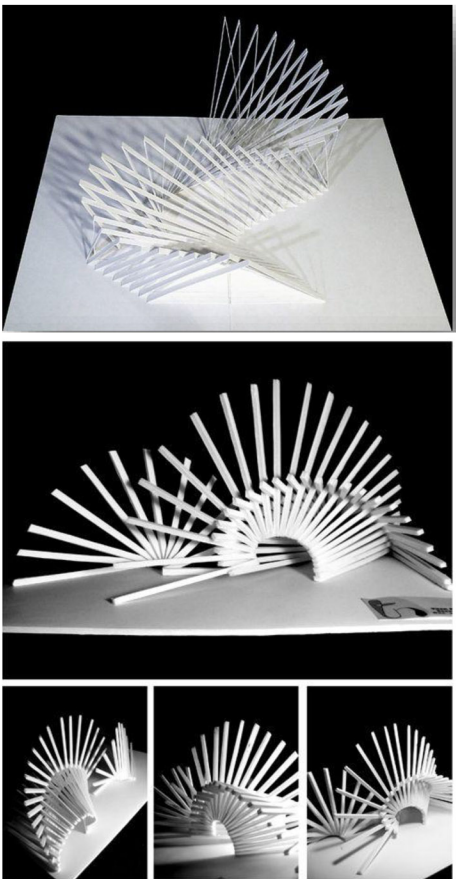
render



**Title of work:** Tujar Tower  
**Type of space:** Mixed Use Tower  
**Location of work:** Kuwait  
**Year:** 2017  
**Scope:** Façade, Interior and Landscape Lighting  
**Consultant:** Dar Osama Bukhamseen Design



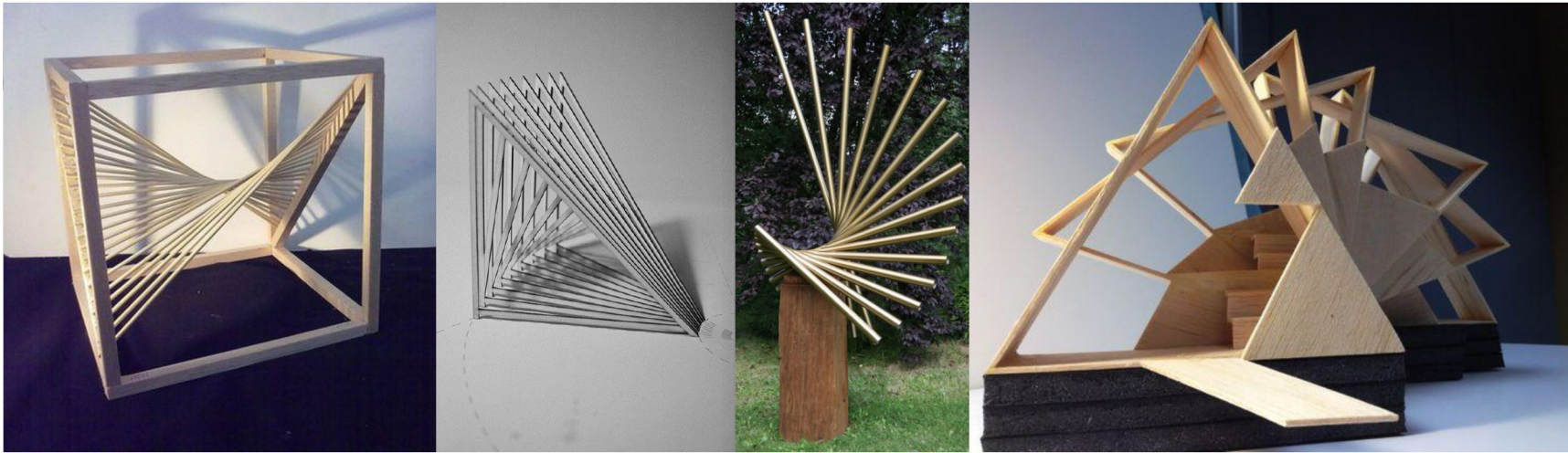
analysis



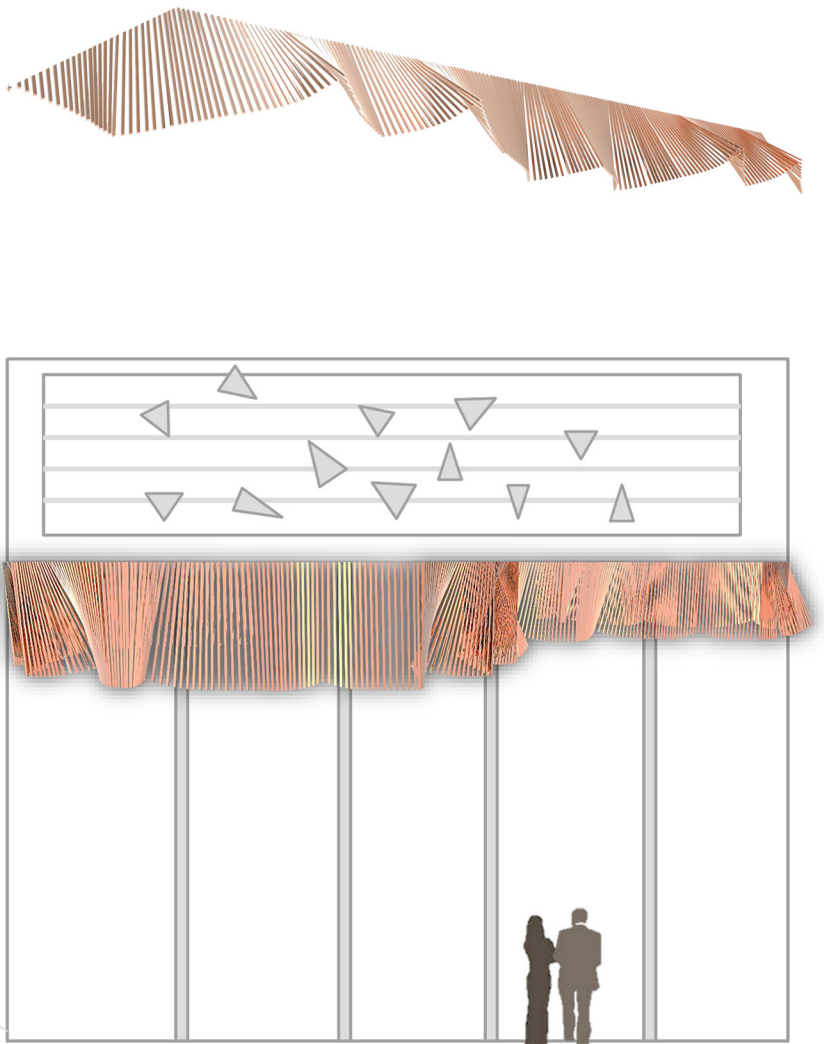
concept

**The Tower Entrance Canopy- Lighting Concept:**

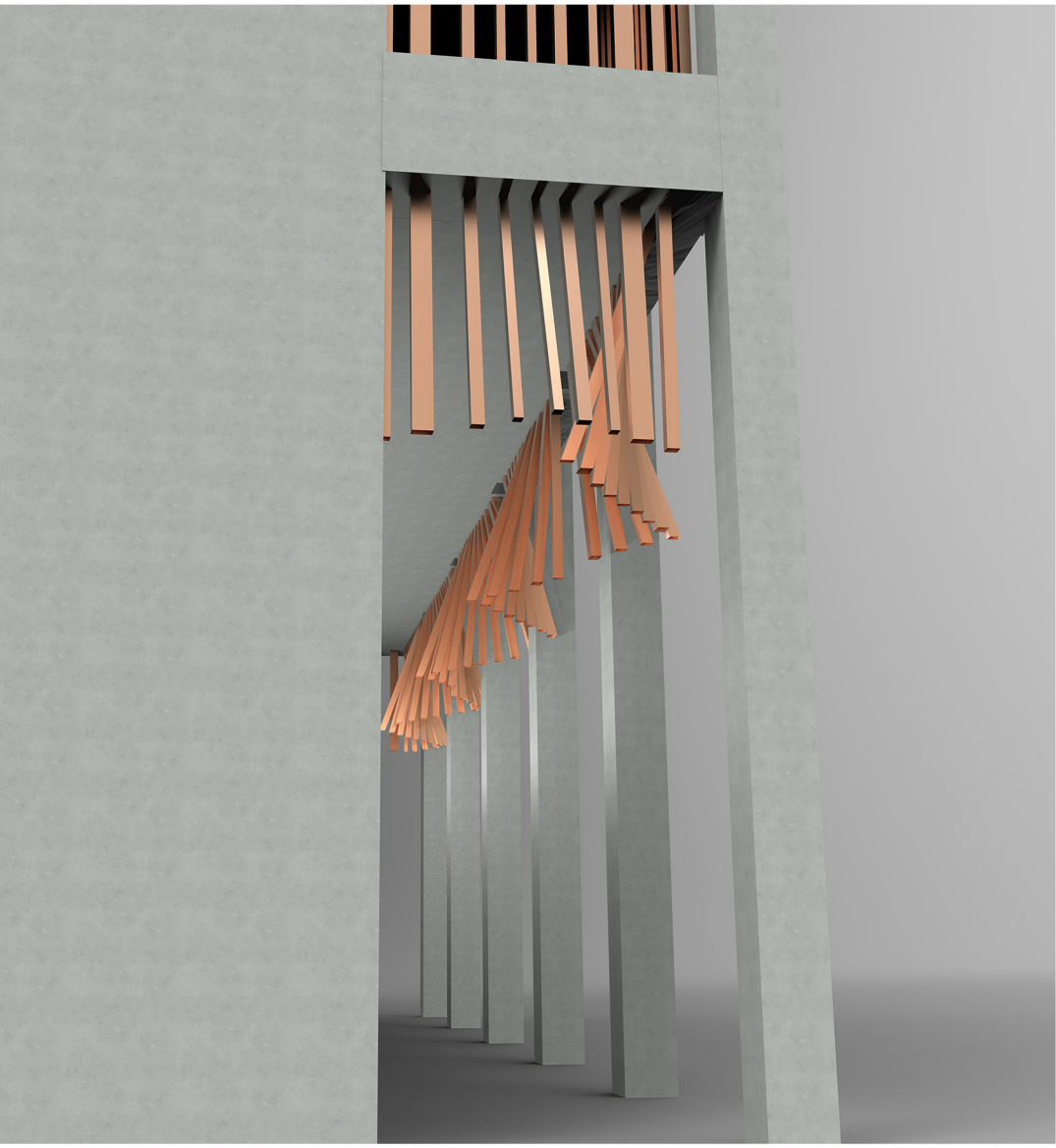
The existing linear structures of the façade were the keys behind our concept. These existing vertical tubes would start twisting and turning from their vertical state to diagonal and even horizontal states, forming a rhythmic dancing lighting installation with light sources hiding within.



moodboard



3D module

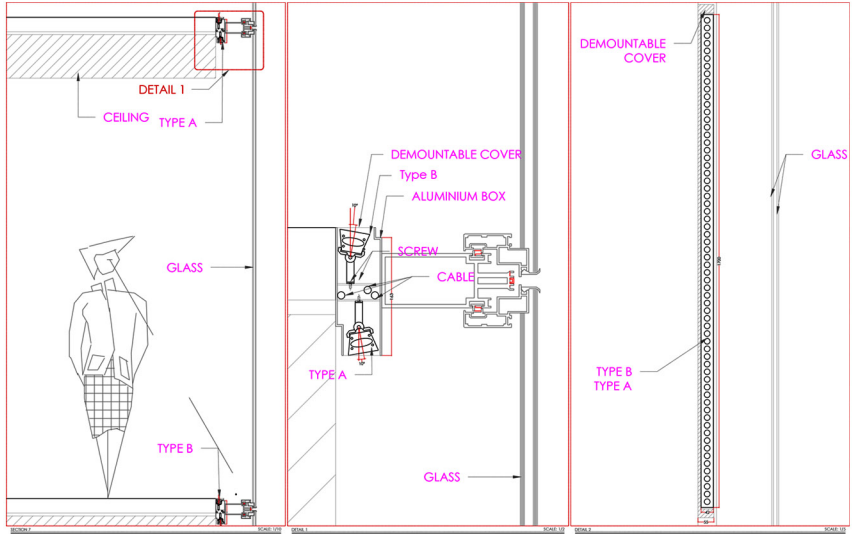
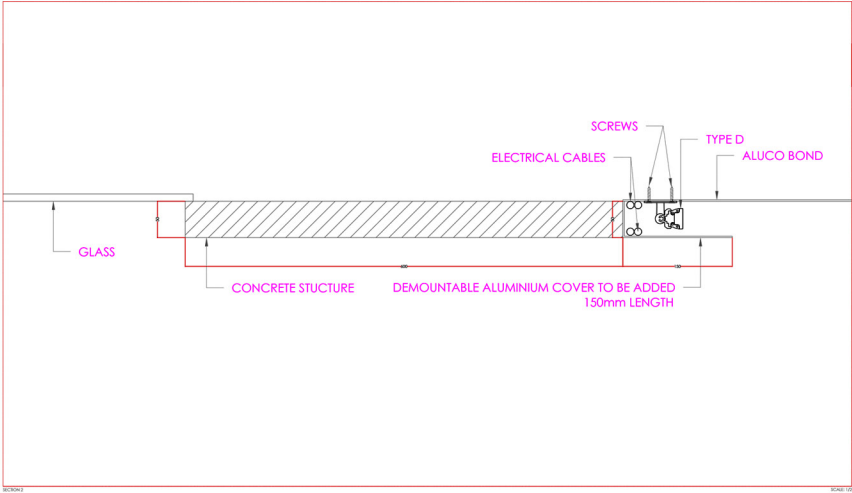


renders

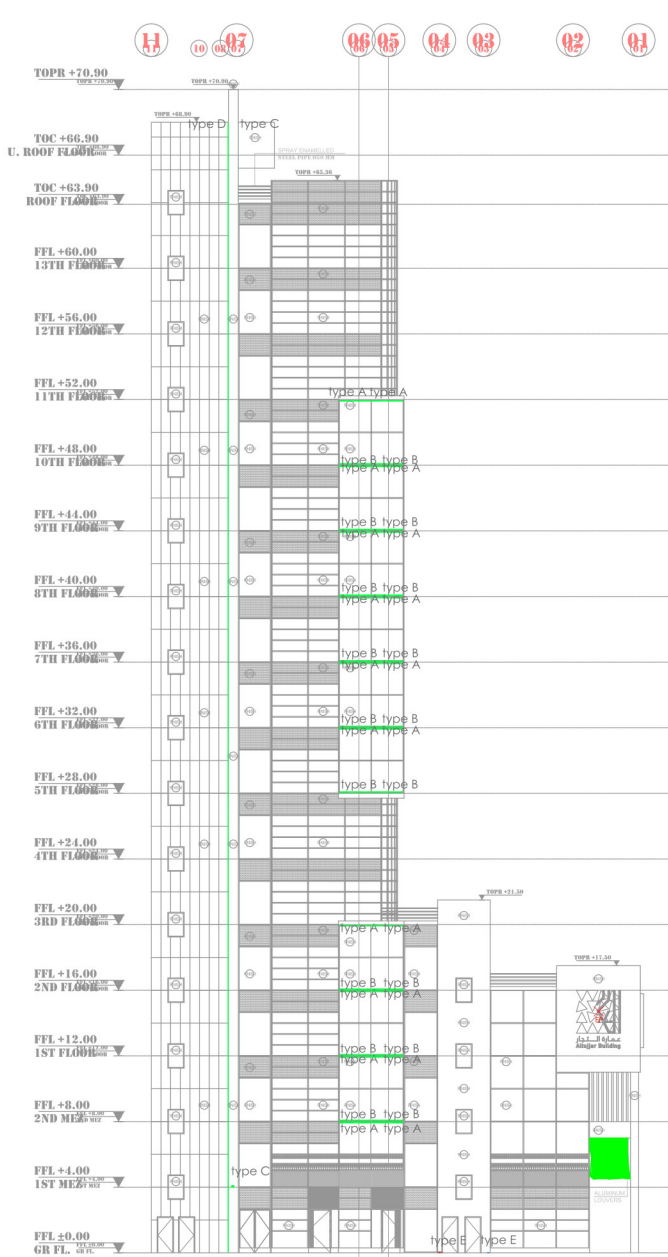




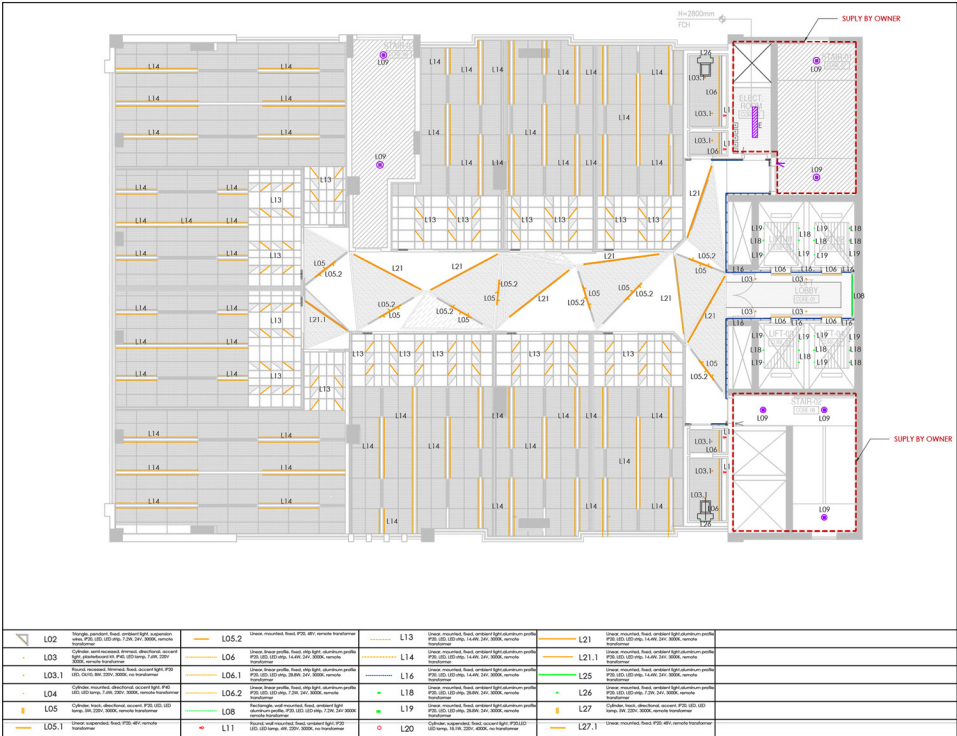
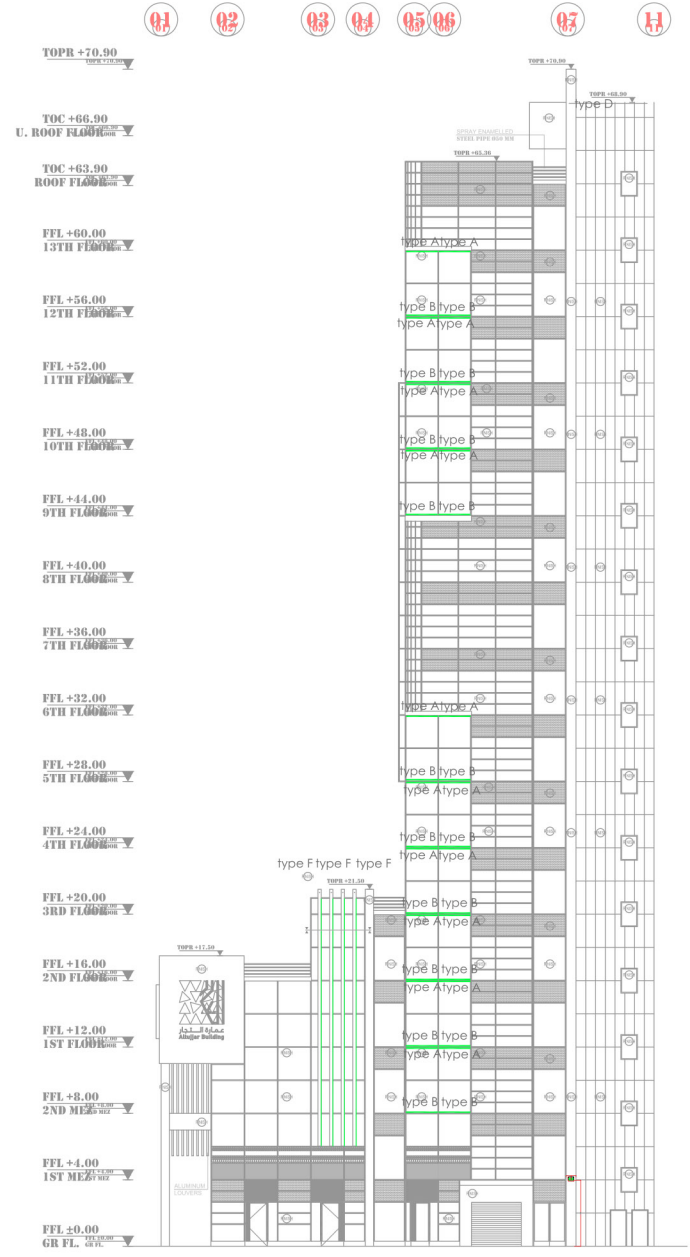
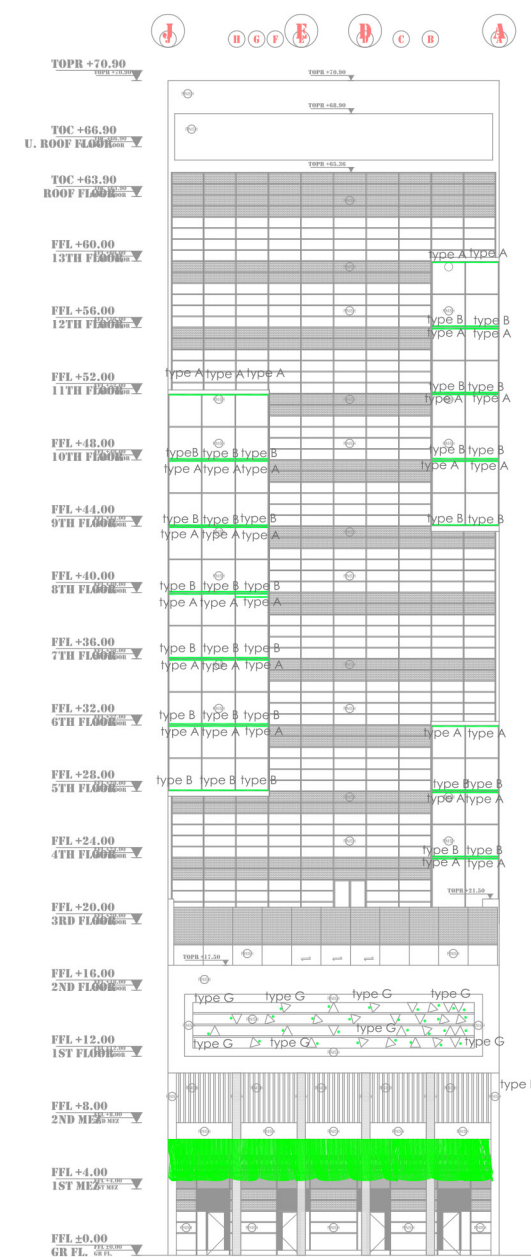
Title of work: Tujar Tower  
Type of space: Mixed Use Tower  
Location of work: Kuwait  
Year: 2017  
Scope: Façade, Interior and Landscape Lighting  
Consultant: Dar Osama Bukhamseen Design



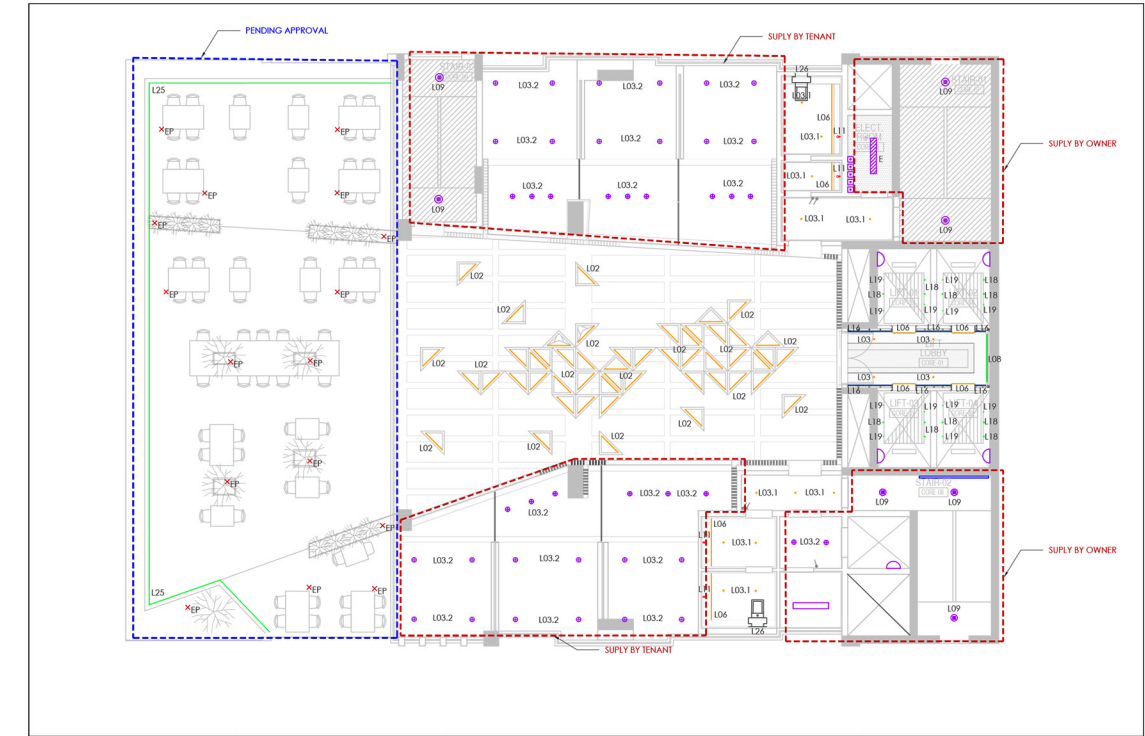
tower lighting details



tower lighting elevation



interior lighting layouts

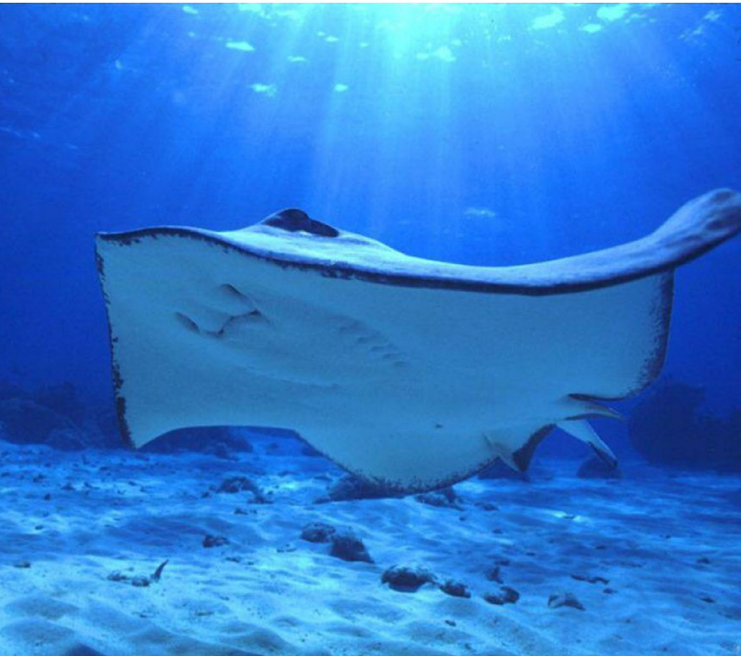




**Title of work:** Sea View  
**Type of space:** Restaurant complex  
**Location of work:** Kuwait  
**Year:** 2013  
**Scope:** Circulation Lighting  
**Consultant:** Lines

**The Lighting Concept:**

The lighting concept started with the intention of unifying all the different restaurants' seating areas together visually through light. Inspiration was also drawn from the location of the restaurant complex- it being next to the sea- thus leading us to focus on organic aquatic shapes to design our lighting solution. The dynamic form of the stingray fish was our inspiration in designing the concave sources of light that spread through the long stretch of courtyard.



inspiration

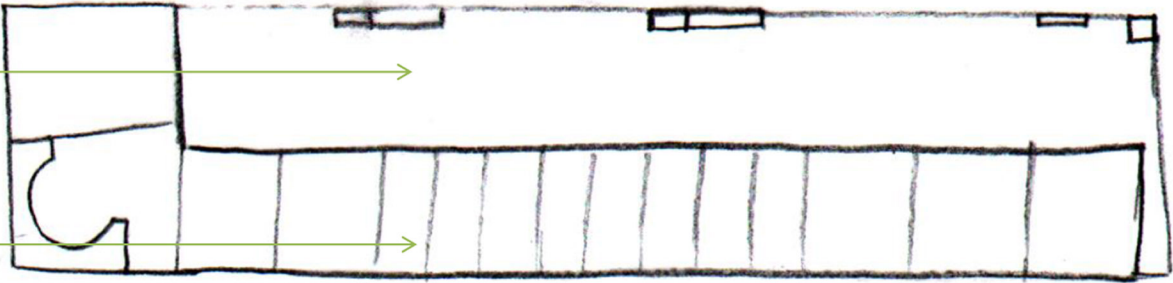


Seating area

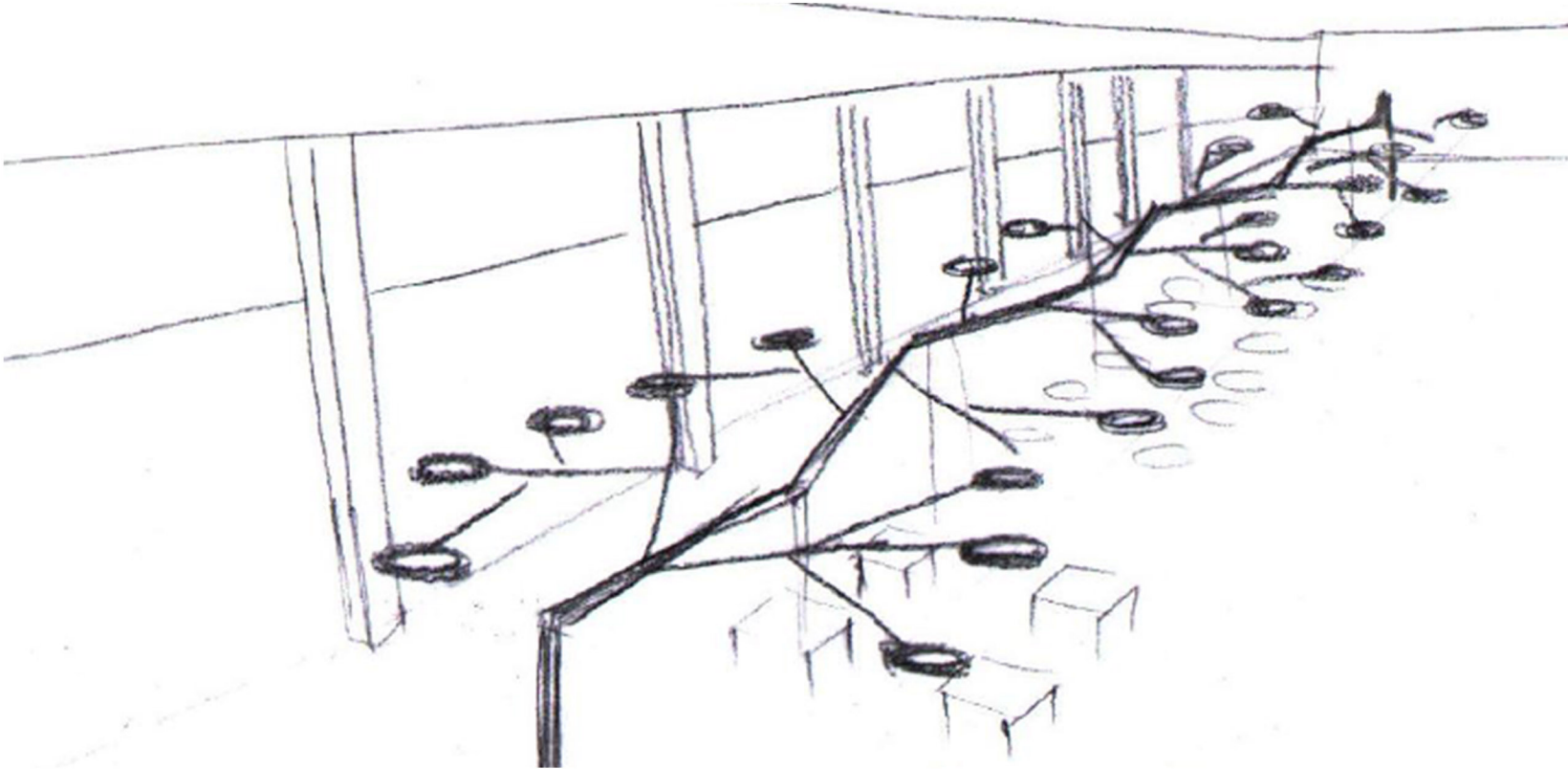
Main facade

Shops

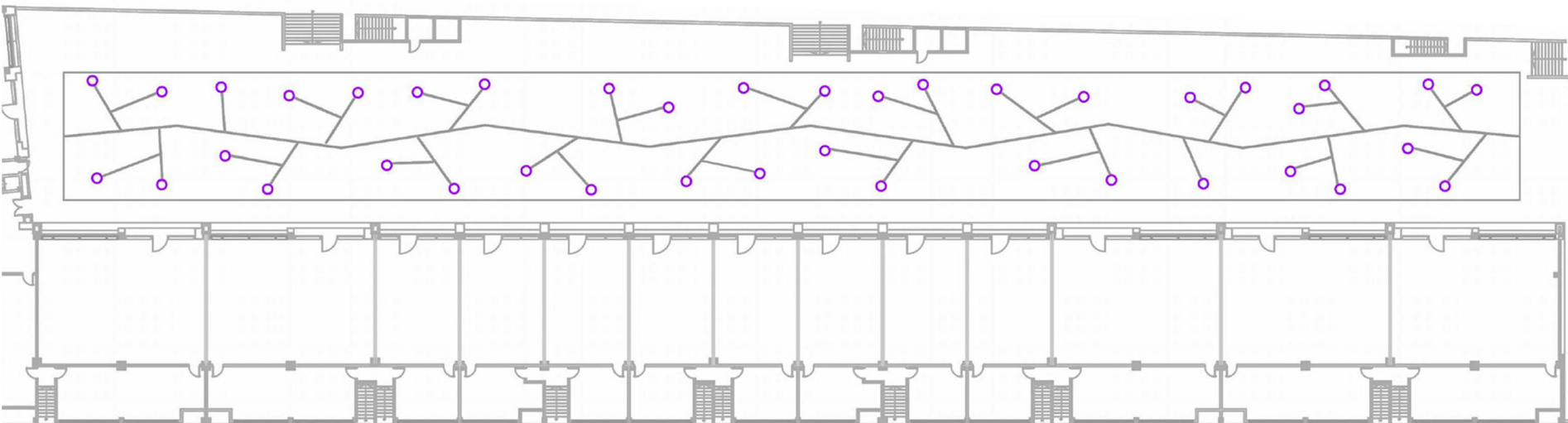
Analysis



moodboard



sketch

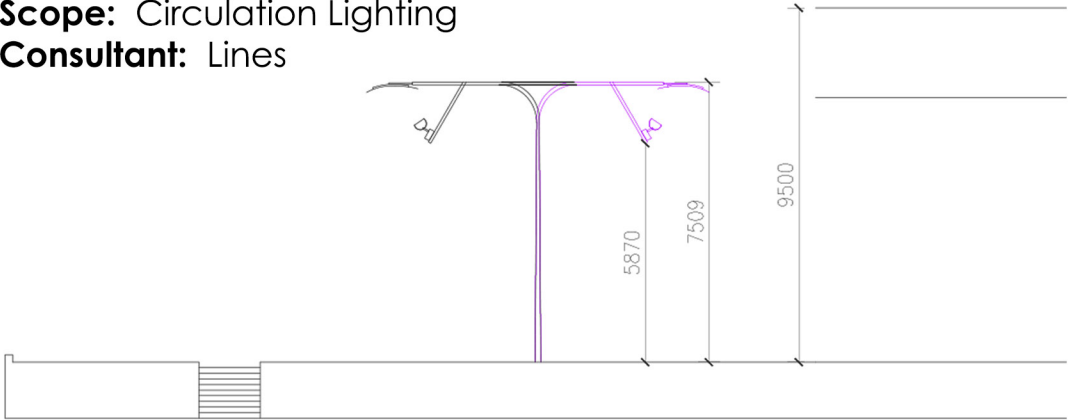


schematic layout

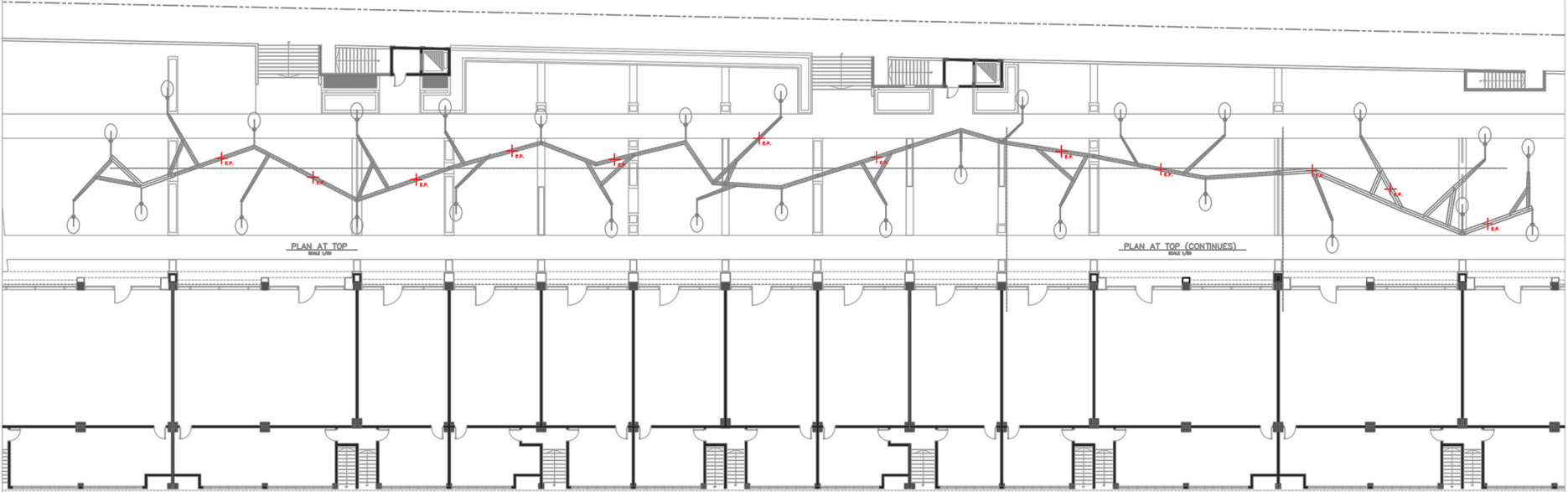


Title of work: Sea View  
Type of space: Restaurant complex  
Location of work: Kuwait  
Year: 2013  
Scope: Circulation Lighting  
Consultant: Lines

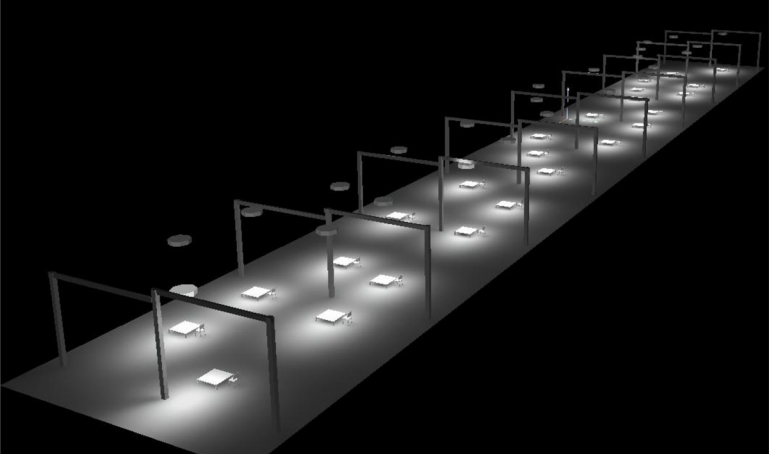
Lighting Layout  
Elevation  
Lux Study  
Renders



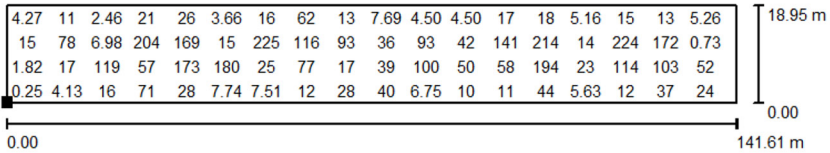
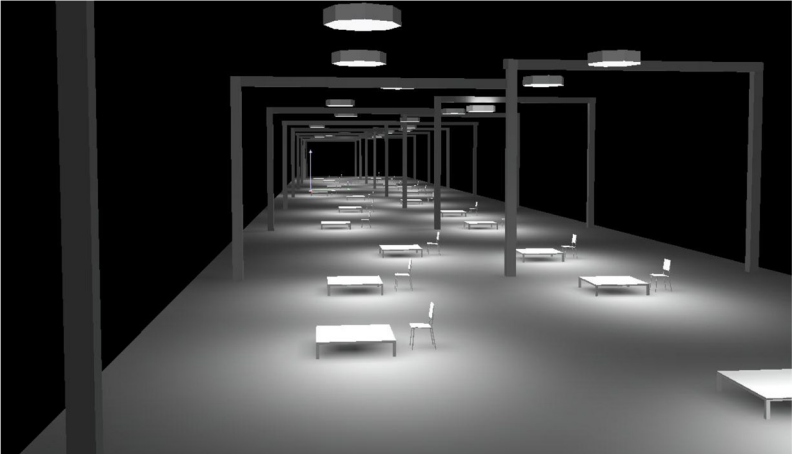
lighting elevation



lighting layout



lux study



Not all calculated values could be displayed.

Position of surface in external scene:  
Marked point: (-56.910 m, -3.036 m, 0.000 m)

Values in Lux, Scale 1 : 1013

Grid: 128 x 64 Points

$E_{av}$  [lx]  
57

$E_{min}$  [lx]  
0.21

$E_{max}$  [lx]  
412

$u_0$   
0.004

$E_{min} / E_{max}$   
0.001



render



final image

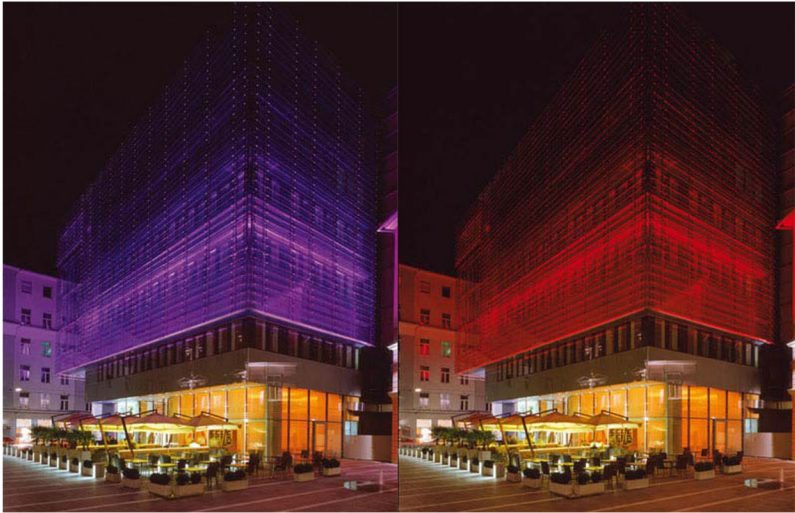


**Title of work:** Mina Tower  
**Type of space:** Mixed Use Tower  
**Location of work:** Lebanon  
**Year:** 2011  
**Scope:** Façade Lighting  
**Consultant:** Apractice

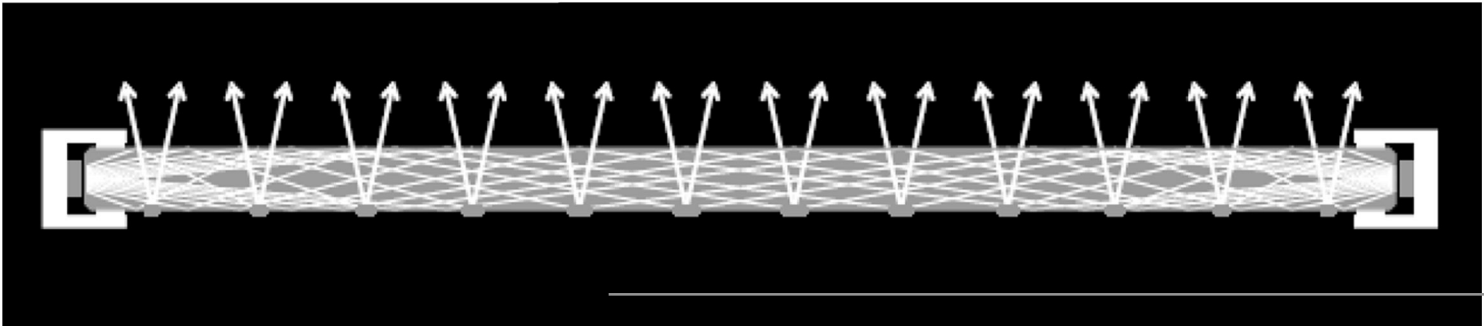
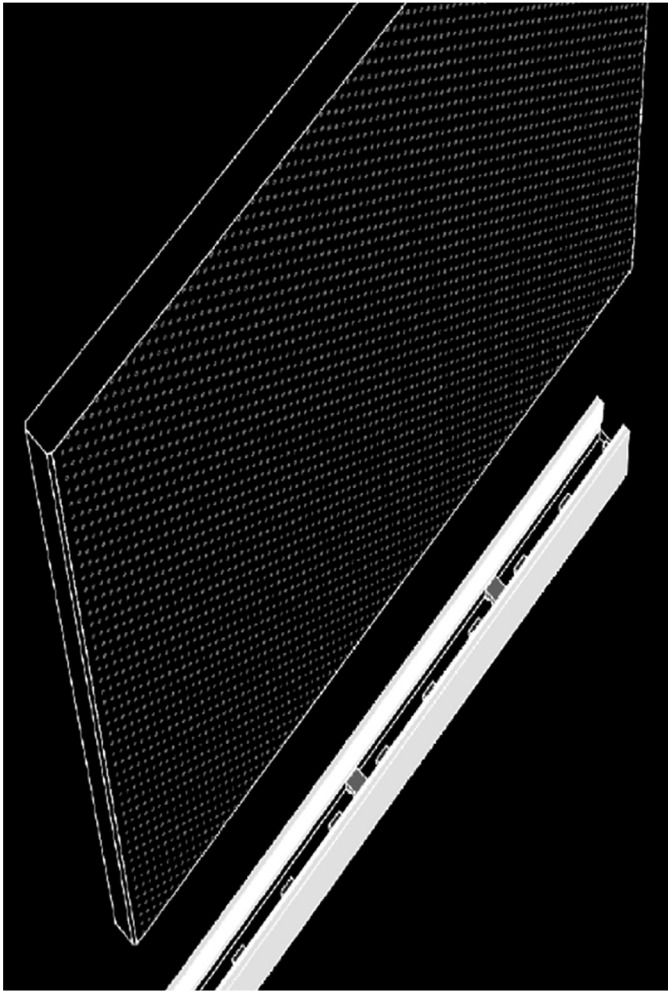
**The Lighting Concept:**

Light as opposed to lighting is our main concept.  
In the heart of old Beirut, a Green Building is equipped with photovoltaic panels in its facade. The lighting concept mimics the absorption of light and energy on the PV Panels during the day, while the panels at night emit the light. When it's lit, the panels appear as high-grade, slightly translucent glass. When it's dark, they transform into a source of light.

Emdelight-glass causes architecture to interact with people and the surroundings, as 'Dynamic architecture'. The lighting insertion continues the linearity of black photovoltaic panels and creates the opposite of the materials in use in the north and west elevations. For the south elevation, the louvers are also lit by linear LED lights just to highlight the bonding of half of the facade.



inspiration



concept

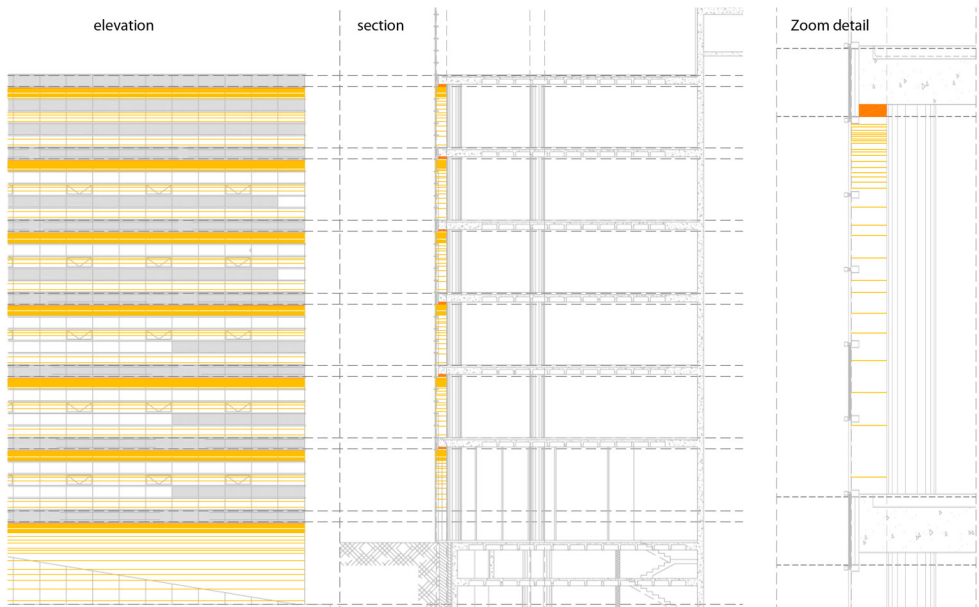
step 1

Step 2

Step 3



schematic drawings





Title of work: Mina Tower

Type of space: Mixed Use Tower

Location of work: Lebanon

Year: 2011

Scope: Façade Lighting

Consultant: Apractice

Lighting Elevations

Render

Completed Images



render



completed project pictures



lighting elevation



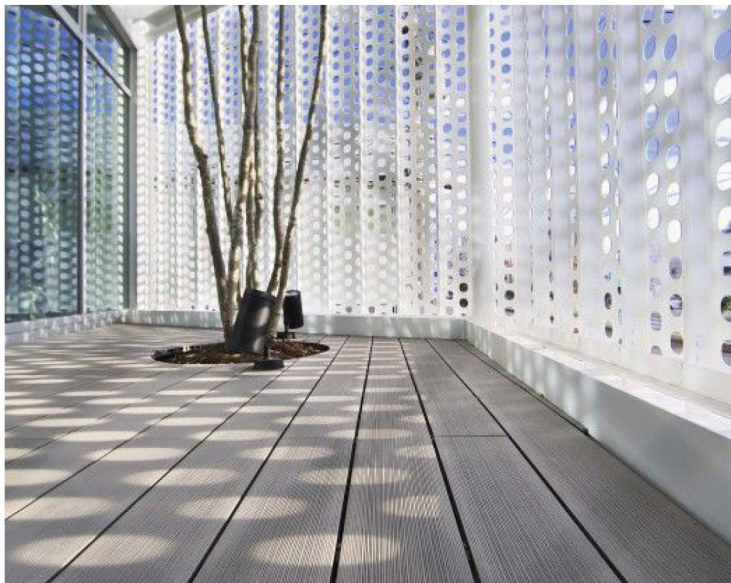


**Title of work:** Vibes  
**Type of space:** Restaurant complex  
**Location of work:** Kuwait  
**Year:** 2016  
**Scope:** Façade Lighting  
**Consultant:** Lines

**The Lighting Concept:**  
Our challenge was to translate the project's name into something palpable. Vibes are emotions that are felt, and are unstable and never rigid. In contrast to that, the architecture is rigid and the materials used (metal mesh and concrete) are stiff and constant. We transform the rigidity of the metal mesh used in the project into something fluid that adheres to positive vibes.



inspiration



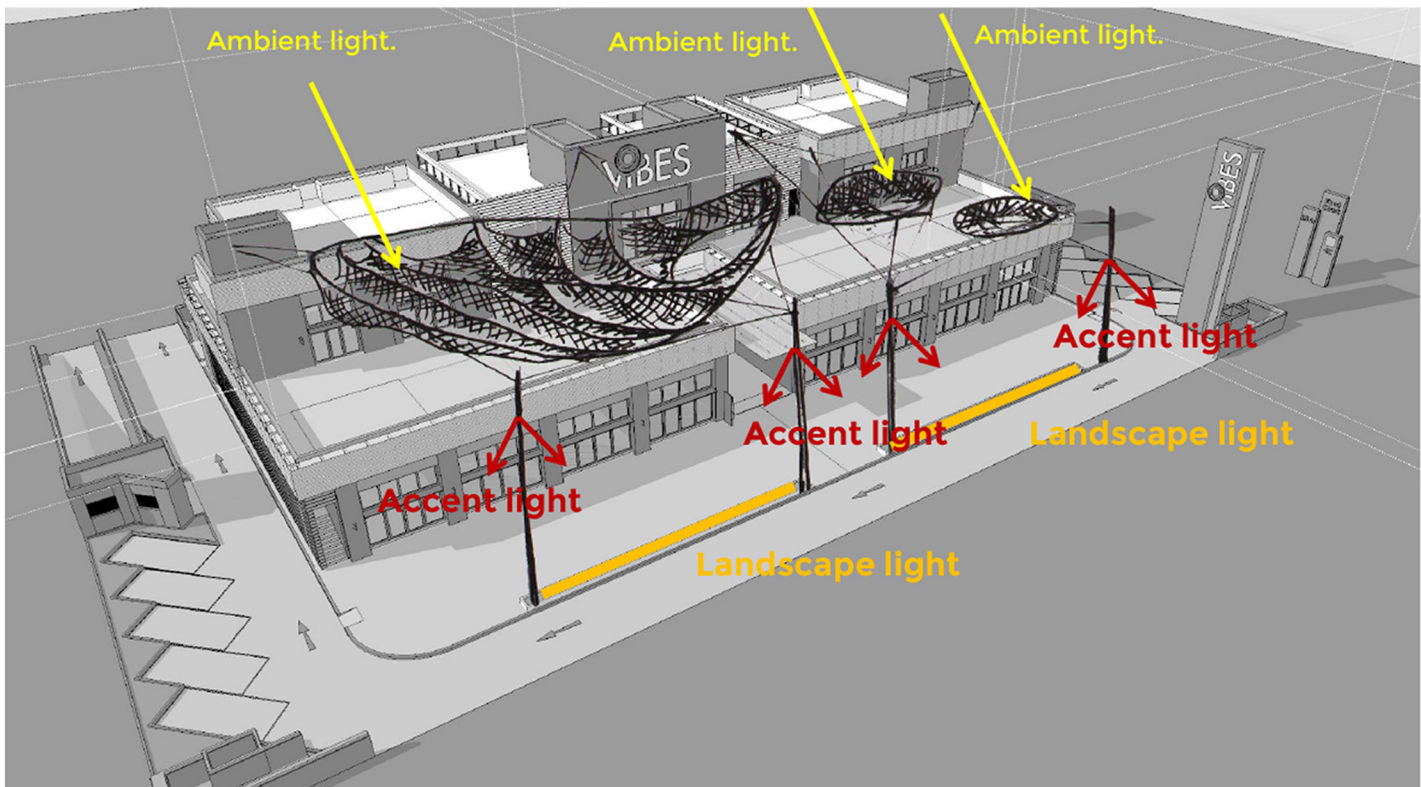
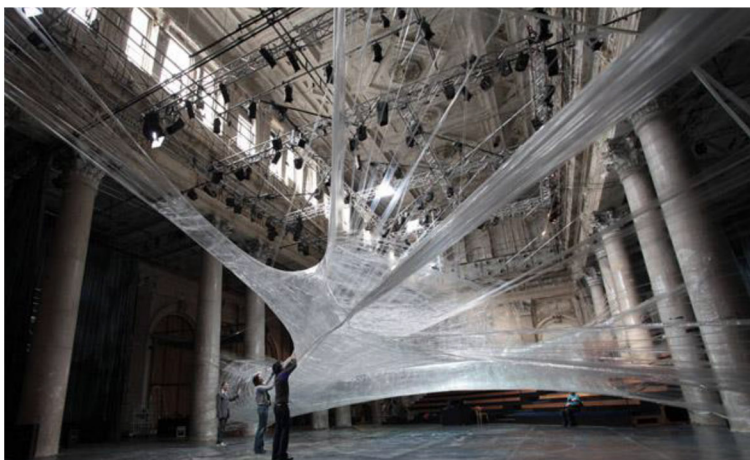
analysis



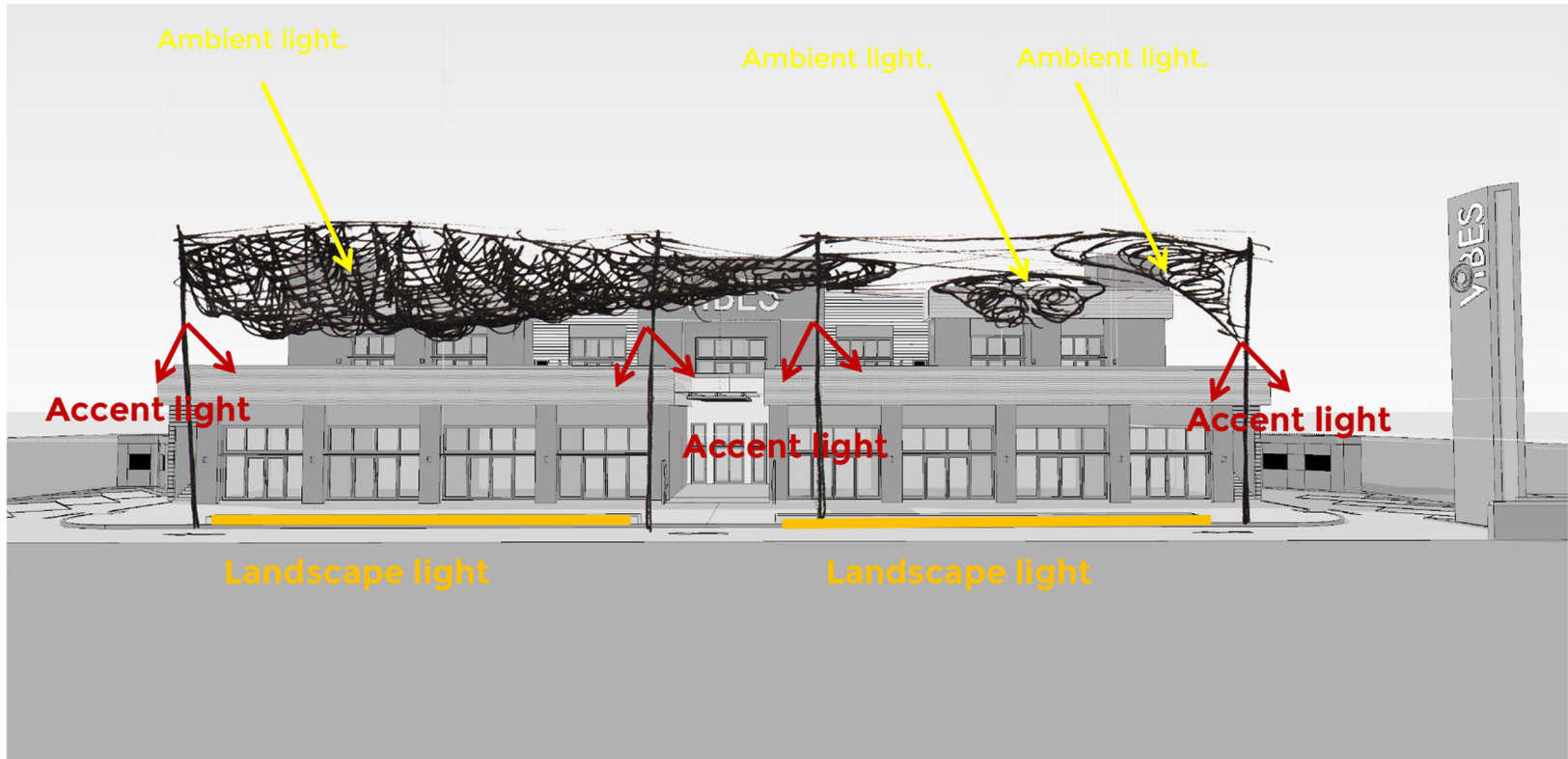
moodboard



materials



concept

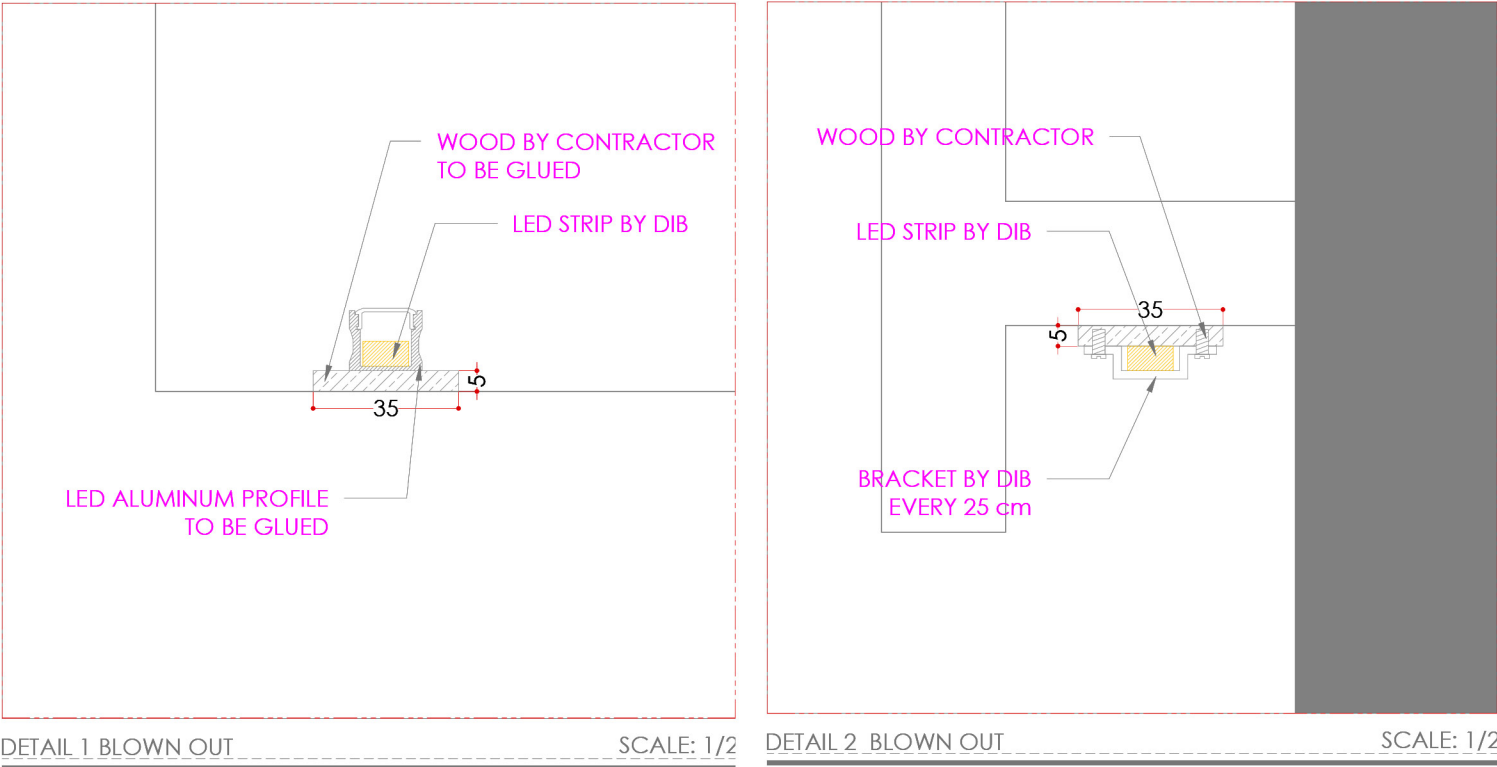




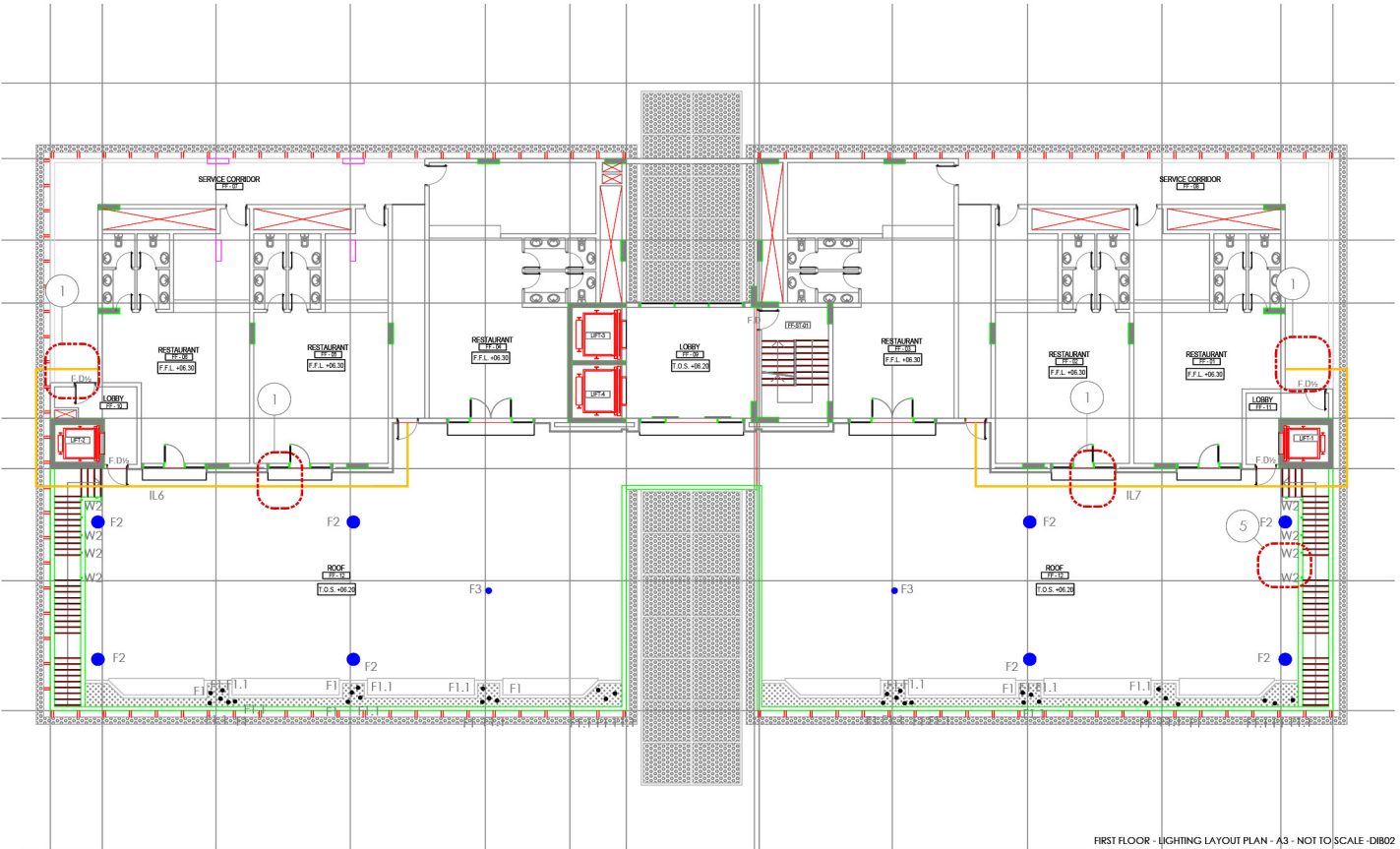
Title of work: Vibes  
Type of space: Restaurant complex  
Location of work: Kuwait  
Year: 2016  
Scope: Façade Lighting  
Consultant: Lines



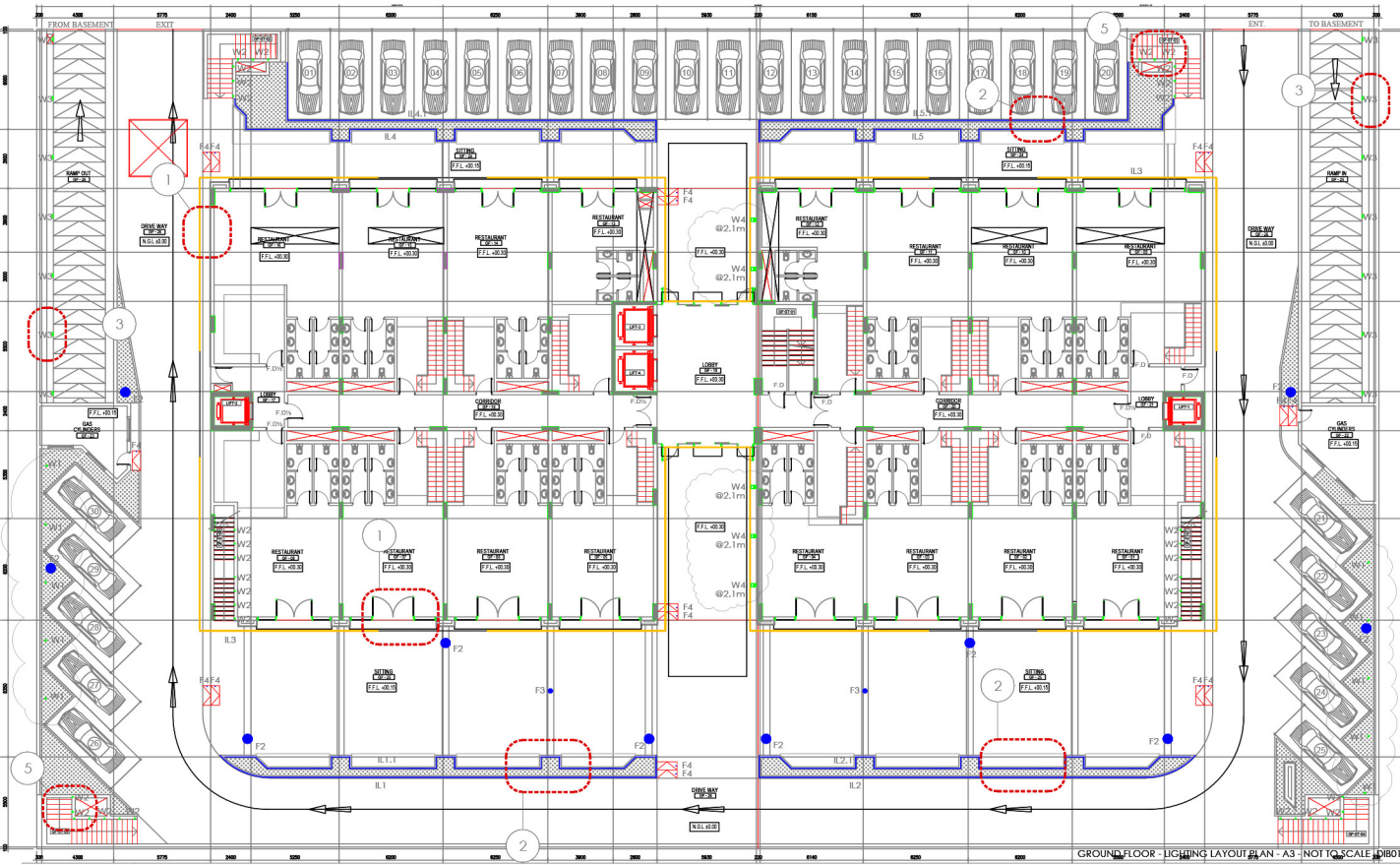
Elevations



Details



FIRST FLOOR - LIGHTING LAYOUT PLAN - A3 - NOT TO SCALE - DIB02

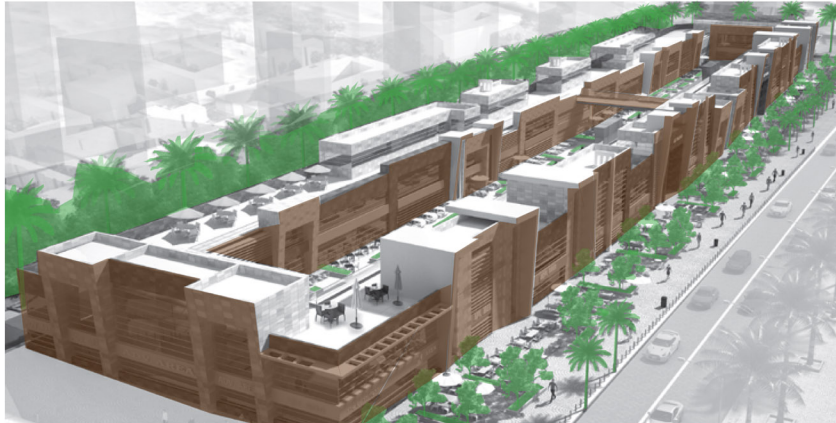


GROUND FLOOR - LIGHTING LAYOUT PLAN - A3 - NOT TO SCALE - DIB01

Plans



**Title of work:** Al Ashira  
**Type of space:** Restaurant Complex  
**Location of work:** Kuwait  
**Year:** WIP  
**Scope:** Interior, Landscape and Façade Lighting  
**Consultant:** MAC Consultants



concept analysis



inspiration



**The Lighting Concept:**

Magical Light Spectacle is naturally present through Fire Flies which light the enchanted forest with moving sparkles while maintaining the contrast between the silent darkness and the vibrant light. Surrounded by the stillness and the whispering of the forest's tree trunks, a Magical Light Spectacle is found right in the middle of the uniformity creating a unique and vibrant experience.

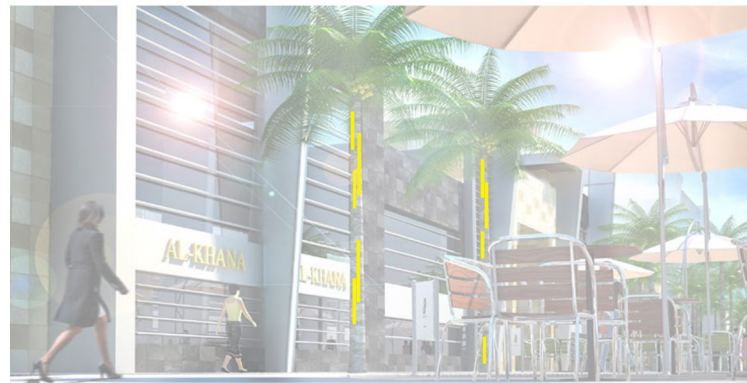
Similar to an enchanted forest, the rigidity and the stillness of the architecture would be smoothened and made much more vibrant through the use of the trees and the landscape on the perimeter and the center of the complex and turning it into a Magical Spectacle of Light, Sounds, Motion, and Greenery.



1- Palm Trees: The Whispering of the Trees is found by walking close to the trees, hugging them, and making contact with them. Through the contact, the trees begin to whisper and sparkle through rain-like lights that would have interactive light within them. These lights would also be accompanied by sounds of nature, adding more layers of experience to the visitors.



2- Trees & Shrubs: The fireflies and the stars in the forest will be imitated through a catenary system installed in and around the trees. A perspective of light dots will imitate the feeling of walking under the stars in a forest.



3- The Internal Void: The sparkling lines of light supported by the trees will extend all the way in the facade walls as if they are breaking through, emerging in the inner void and forming a network of sparkles, adding a layer of functional & mood lighting all at once to the surrounding, in addition to connecting the areas together.

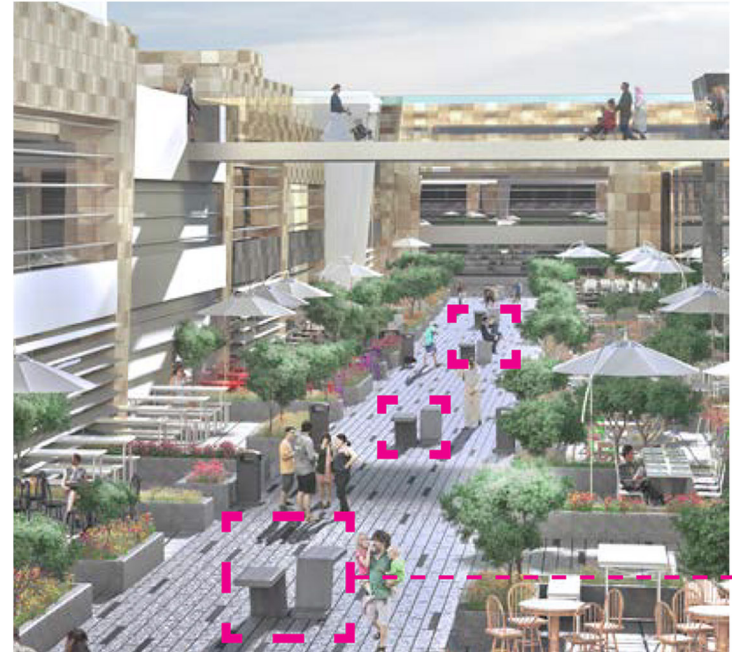
concept



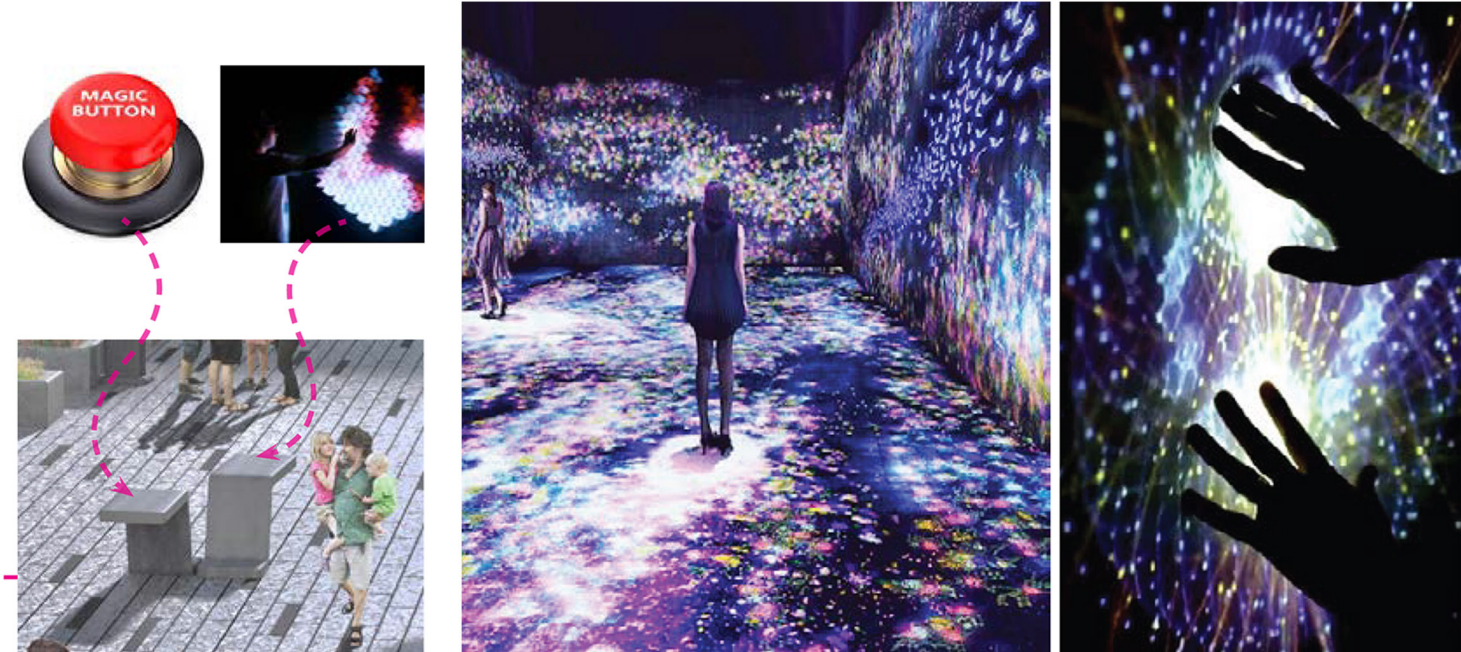
**Title of work:** Al Ashira  
**Type of space:** Restaurant Complex  
**Location of work:** Kuwait  
**Year:** WIP  
**Scope:** Interior, Landscape and Façade Lighting  
**Consultant:** MAC Consultants



interactivity analysis

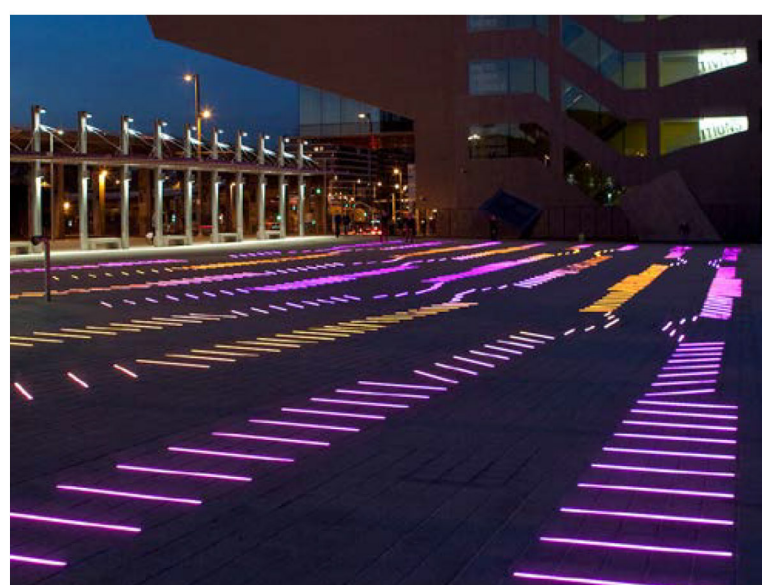
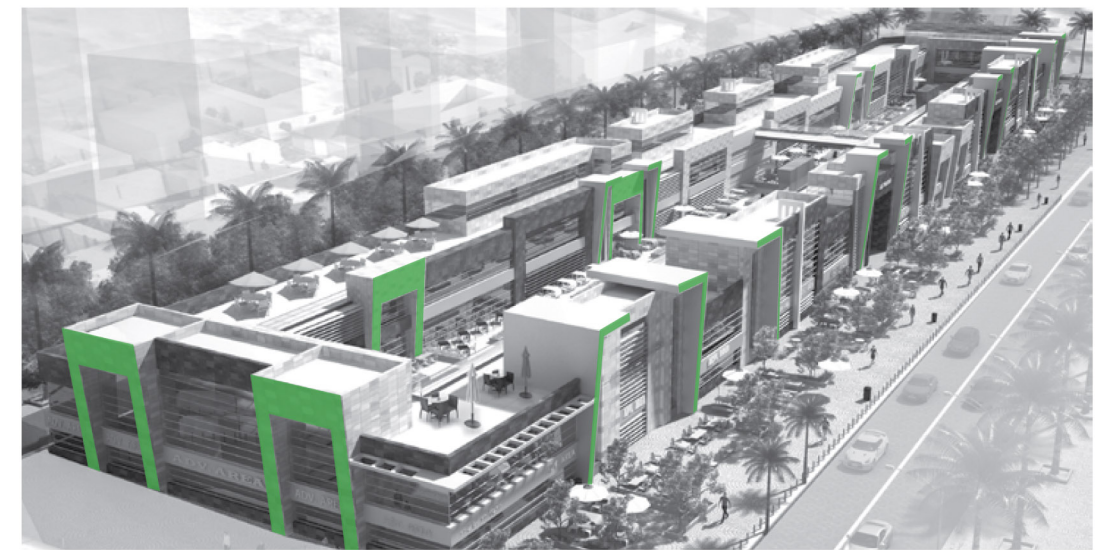
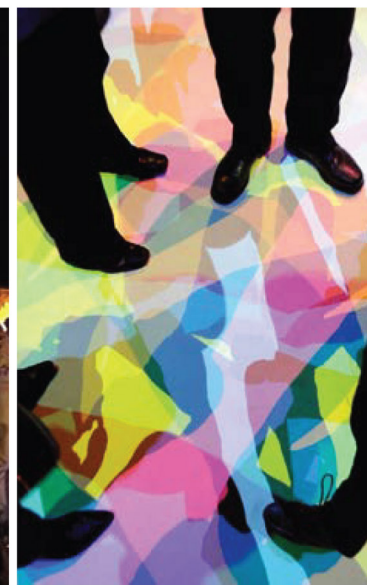


interactivity inspiration



**The Interactivity Concept:**

We incorporate a layer of interactivity to the main circulation stem. Pressing the magic buttons would launch the interactive installations such as projections, colored shadows, etc. every 30 minutes and for a few minutes only, adding a sense of fun and entertainment to the visitors. Sound activated light lines would dominate the main stem of the space moving and changing colors depending on the sound waves of the people using the installation from one side to the other.



interactivity moodboard

green wall intervention

green wall moodboard



**Title of work:** Al Ashira  
**Type of space:** Restaurant Complex  
**Location of work:** Kuwait  
**Year:** WIP  
**Scope:** Interior, Landscape and Façade Lighting  
**Consultant:** MAC Consultants

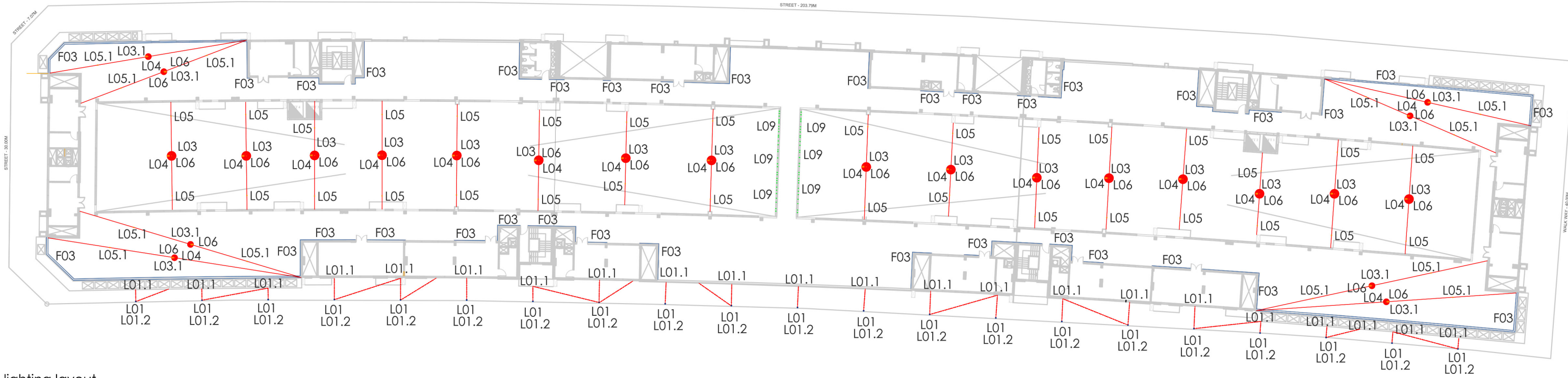
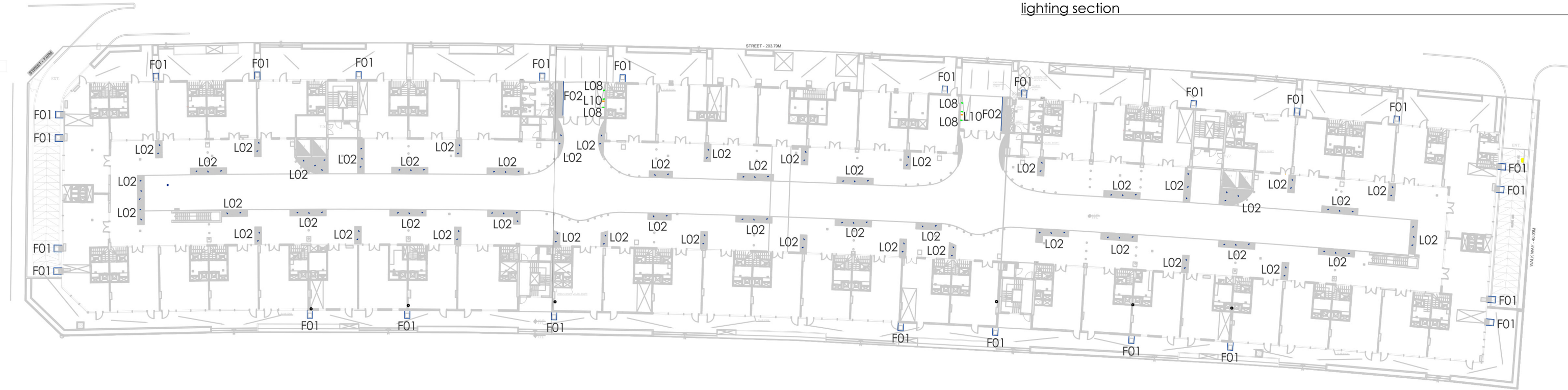
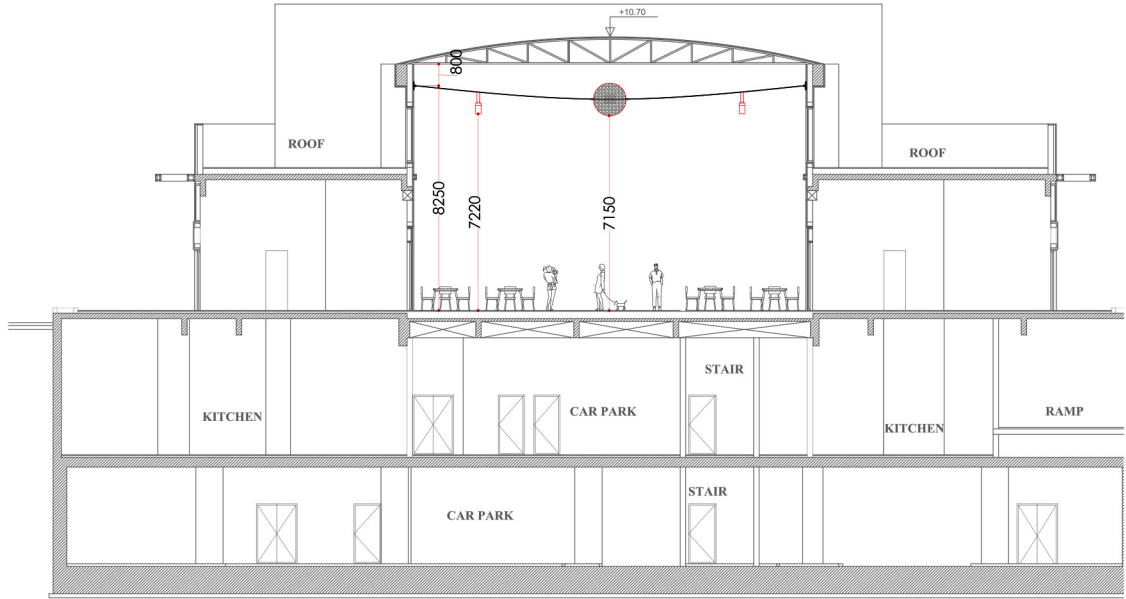
**Renders:**  
- Facade  
- Landscape





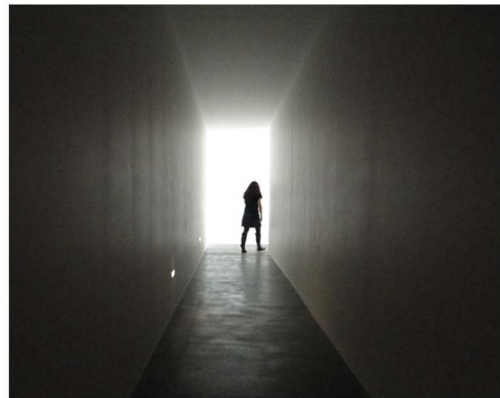
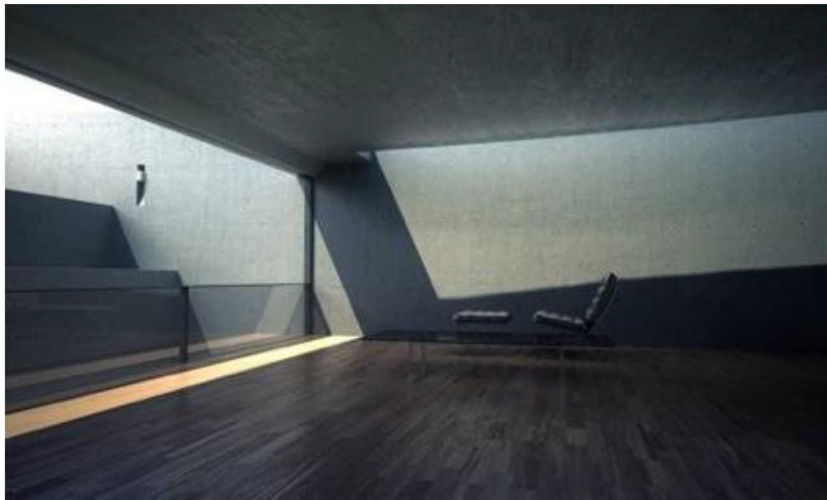
**Title of work:** Al Ashira  
**Type of space:** Restaurant Complex  
**Location of work:** Kuwait  
**Year:** WIP  
**Scope:** Interior, Landscape and Façade Lighting  
**Consultant:** MAC Consultants

**Lighting Layout:**  
- Facade  
- Landscape  
- Lighting section





**Title of work:** Villa Kali  
**Type of space:** Beach House  
**Location of work:** Monsef, Lebanon  
**Year:** 2017  
**Scope:** Interior, Landscape and Façade Lighting  
**Consultant:** Blankpage Architects + Karim Nader



layer 1 inspiration



layer 2 inspiration

## The Lighting Concept:

Our concept Proposal is based on four layers of lighting:

*LAYER 1: Architectural Light-* creative use of natural light by:  
 - using hidden lights to sculpt spaces and disorient perception  
 - using light to create the appearance of geometric space  
 - projecting light across a room, smoothening the interiors

*LAYER 2: Installation Light-* compliment the contours of the surrounding by:

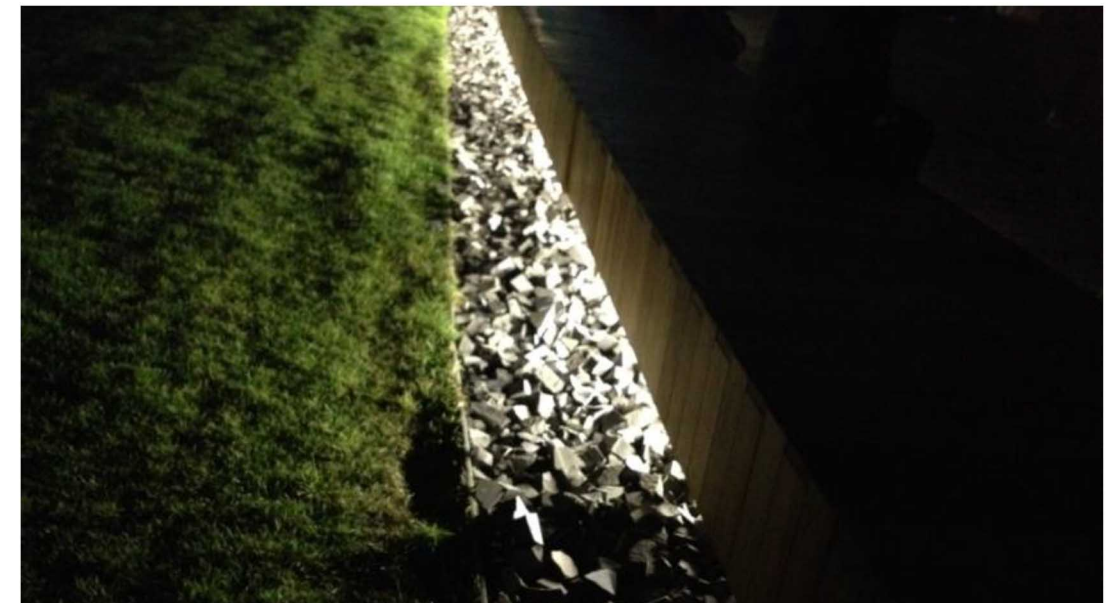
- using rhythm & repetition of decorative lights with interweaving three-dimensional designs that come together to form large geometric shapes which transverse both interior and exterior spaces

*LAYER 3: Event Light-* inspired from Spectacular theatre, an interplay of natural and artificial light, creating a visual illusion

*LAYER 4: Landscape Light-* dark & light defines the space by: combining between hard & soft lighting effects



concept analysis



layer 3 inspiration



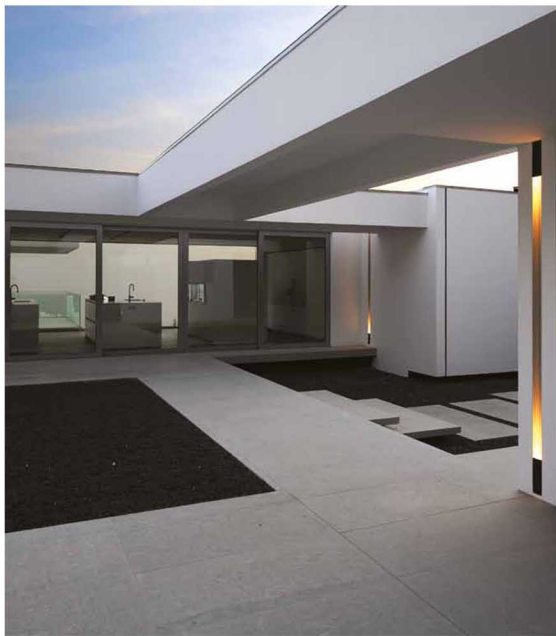
layer 4 inspiration



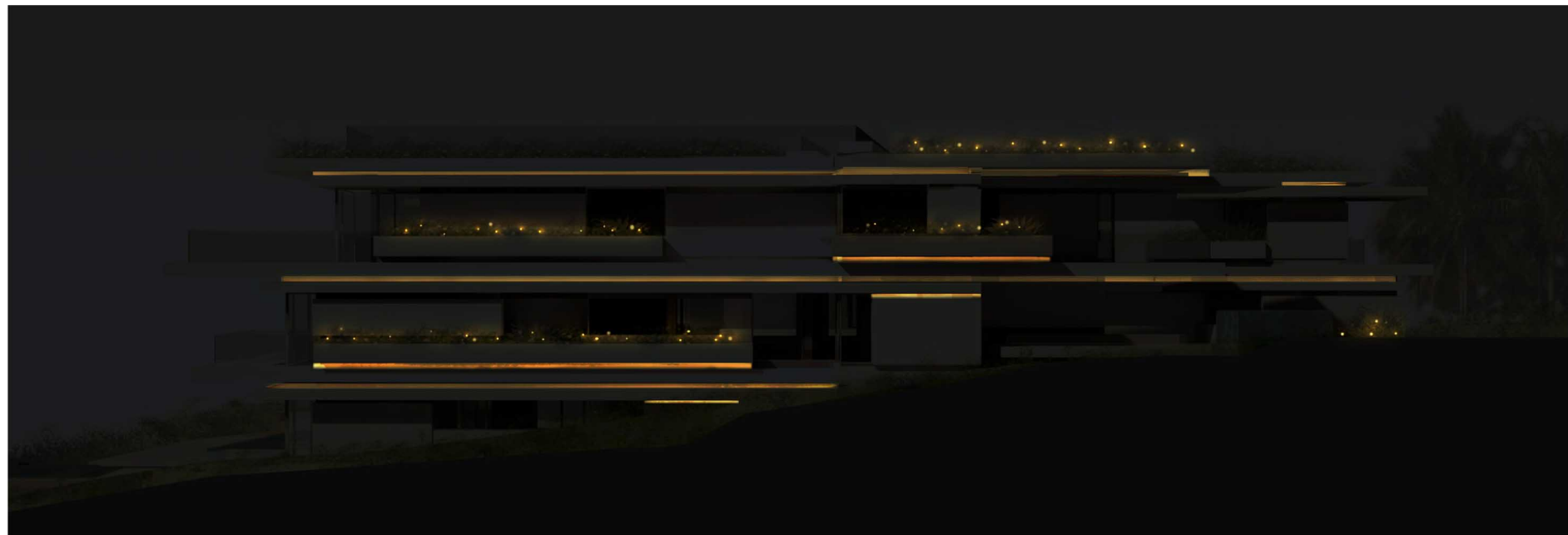
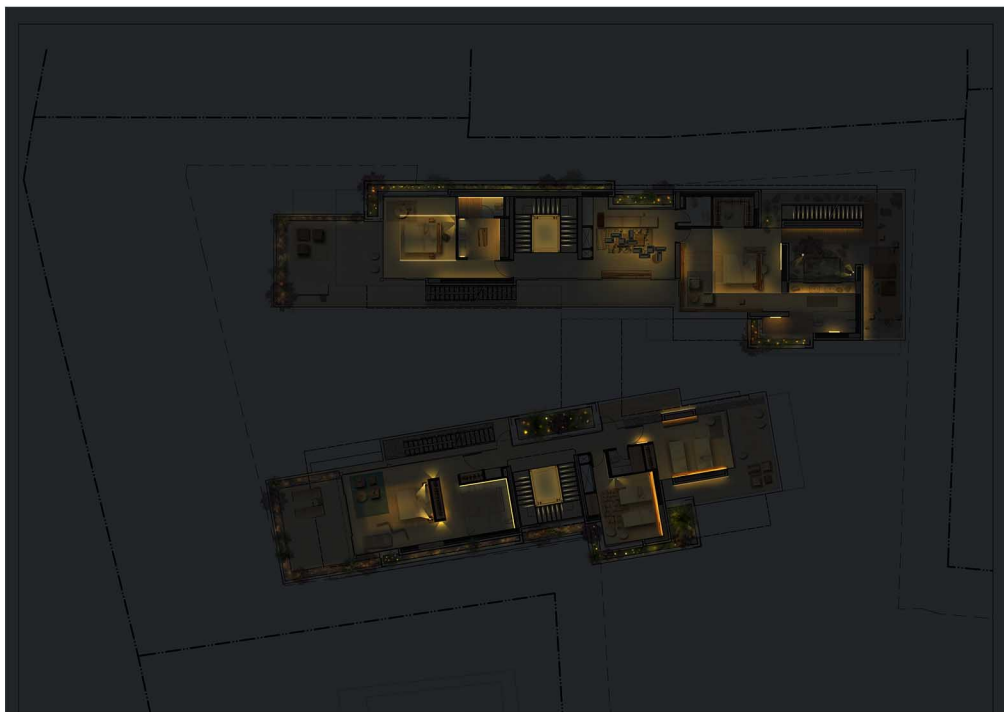
**Title of work:** Villa Kali  
**Type of space:** Beach House  
**Location of work:** Monsef, Lebanon  
**Year:** 2017  
**Scope:** Interior, Landscape and Façade Lighting  
**Consultant:** Blankpage Architects + Karim Nader



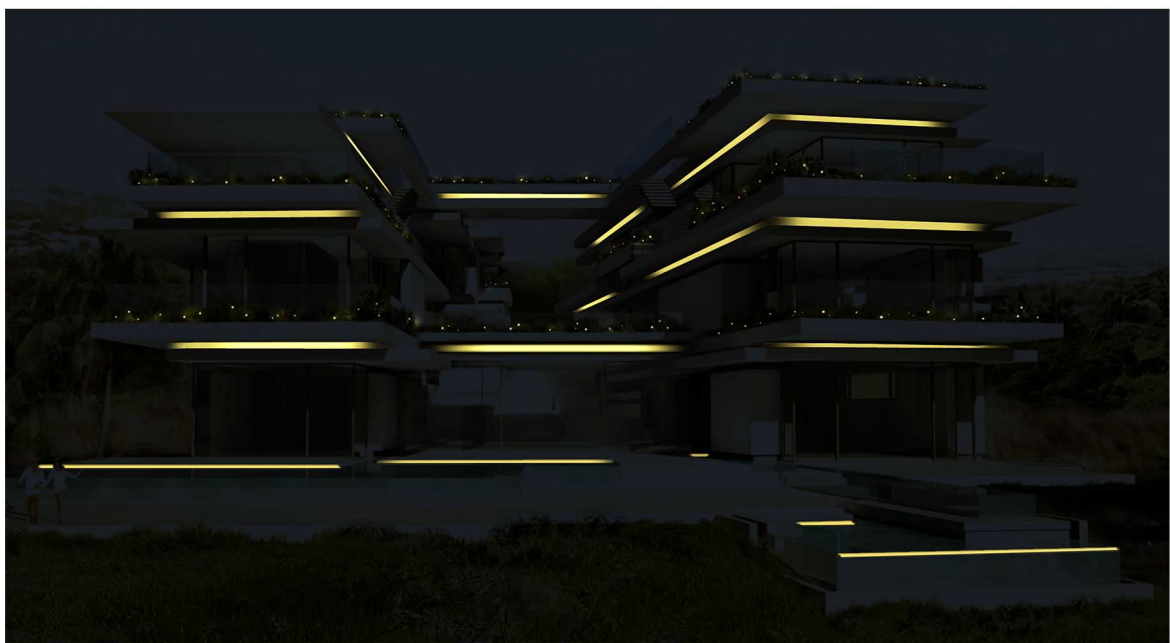
moodboard



schematic interior renders



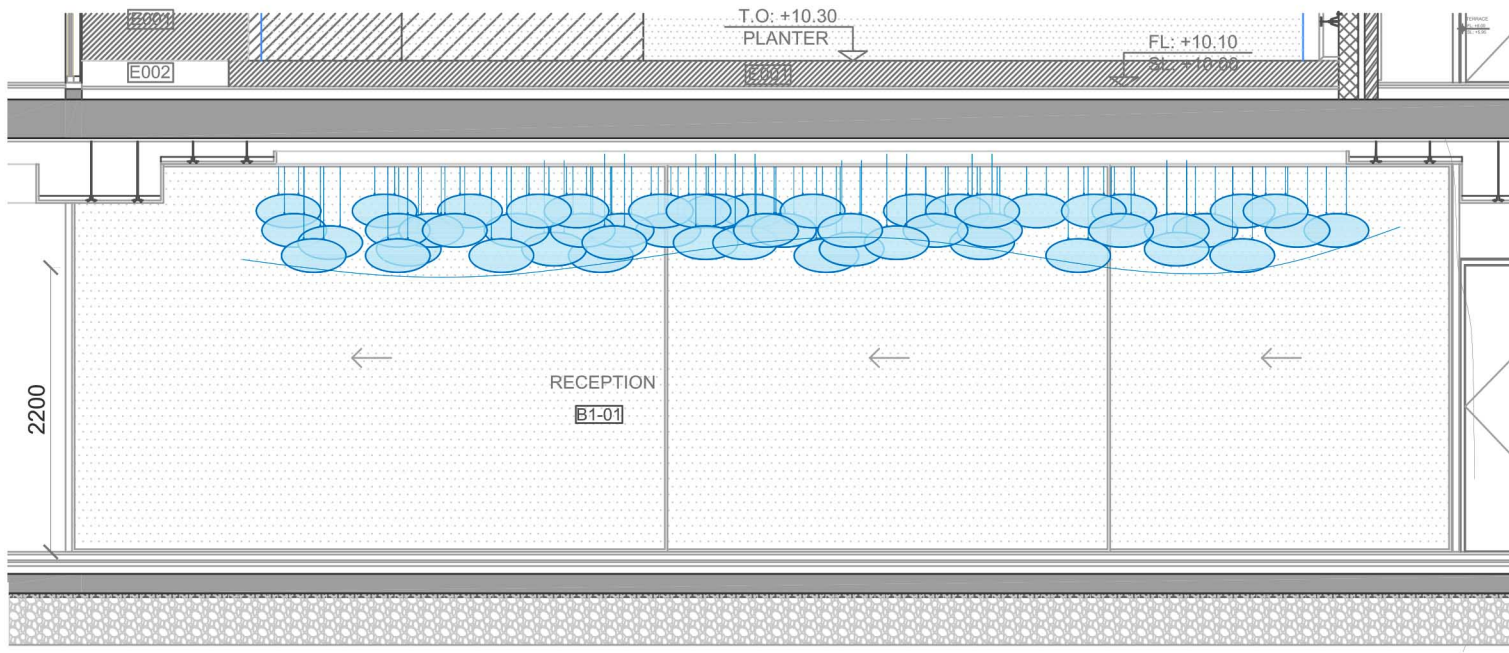
schematic facade renders



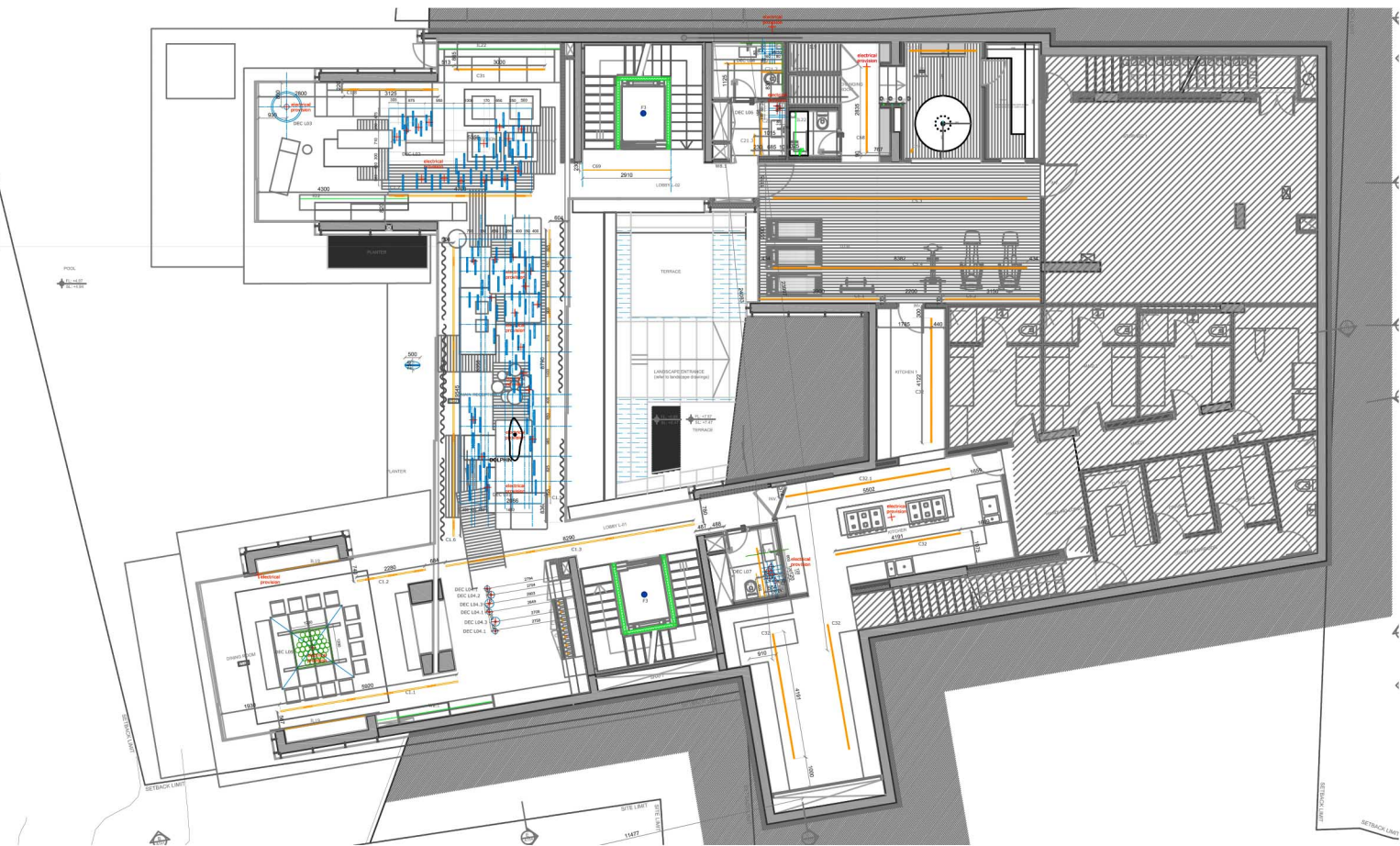


**Title of work:** Villa Kali  
**Type of space:** Beach House  
**Location of work:** Monsef, Lebanon  
**Year:** 2017  
**Scope:** Interior, Landscape and Façade Lighting  
**Consultant:** Blankpage Architects + Karim Nader

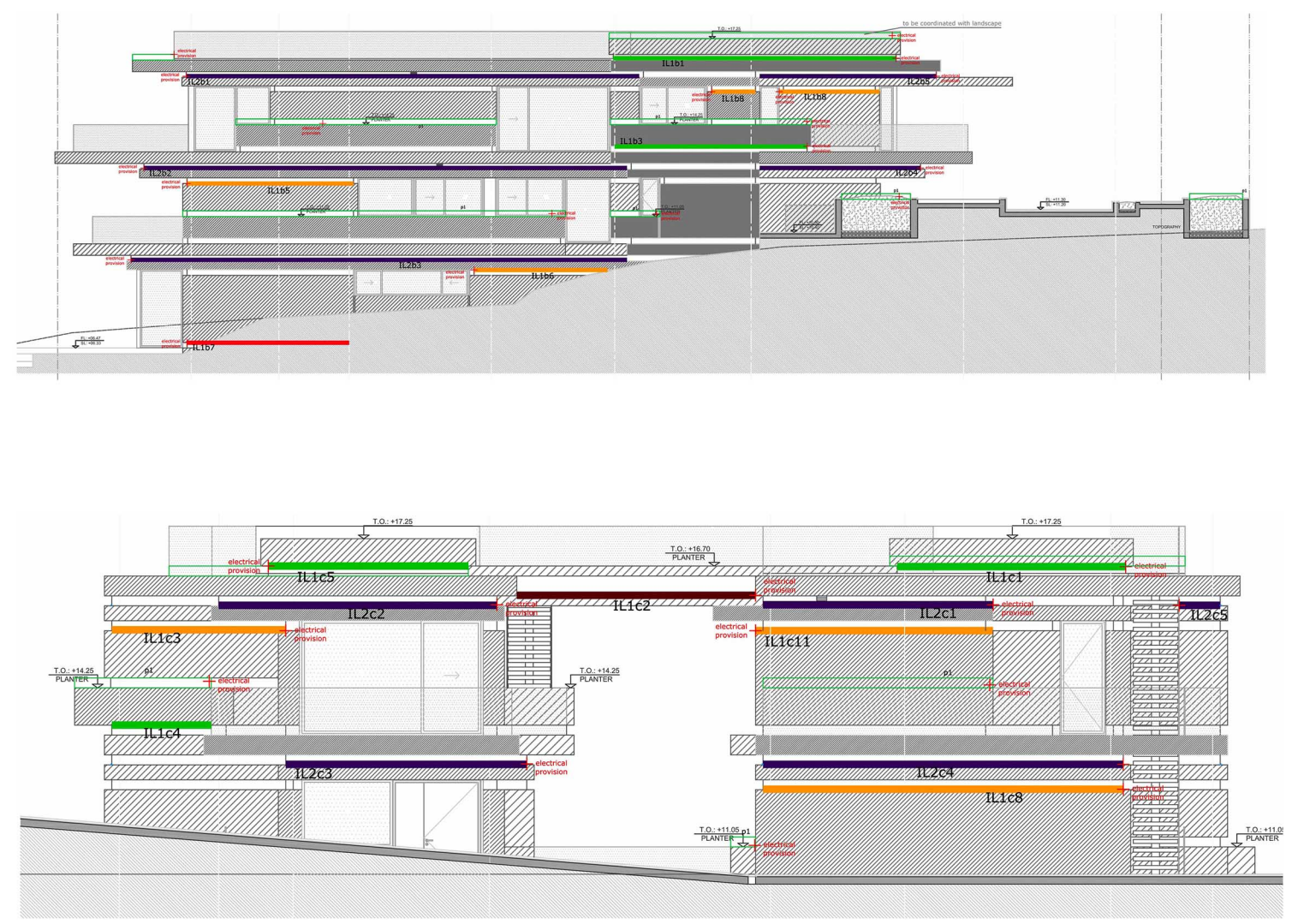
- Lighting Layouts:**
- Interior lighting layout
  - Interior lighting section
  - Facade elevation
  - Landscape lighting layout



section



interior lighting layout



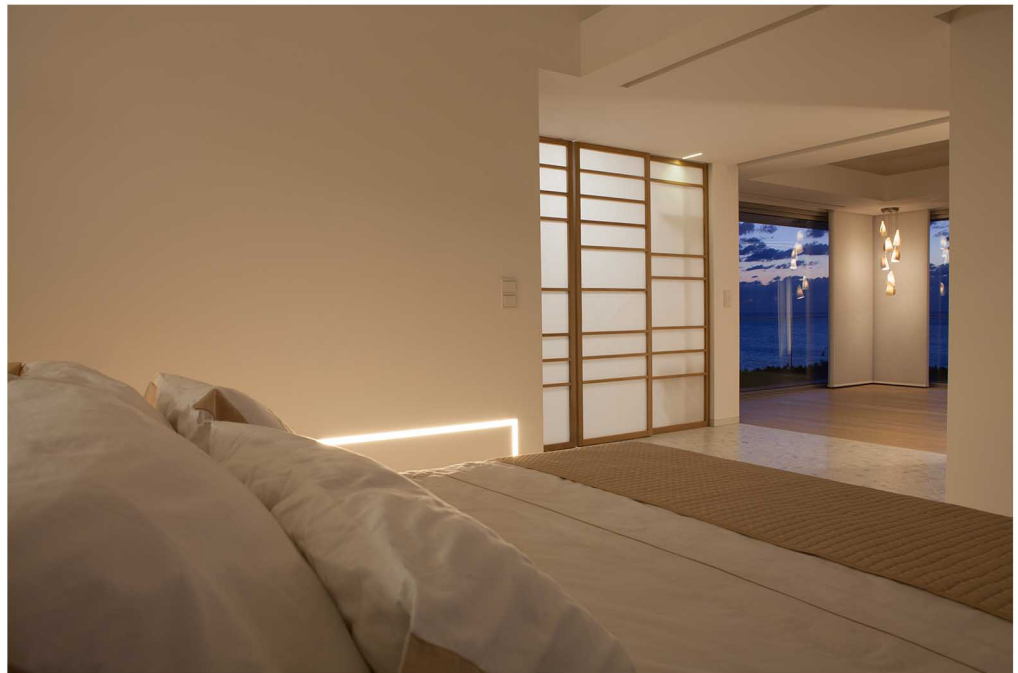
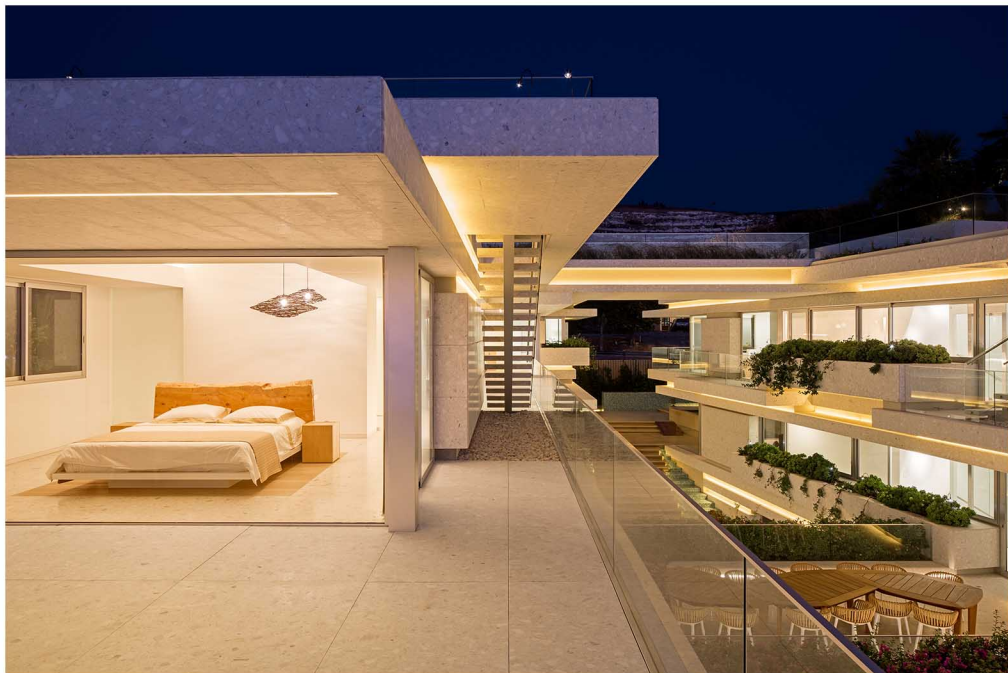
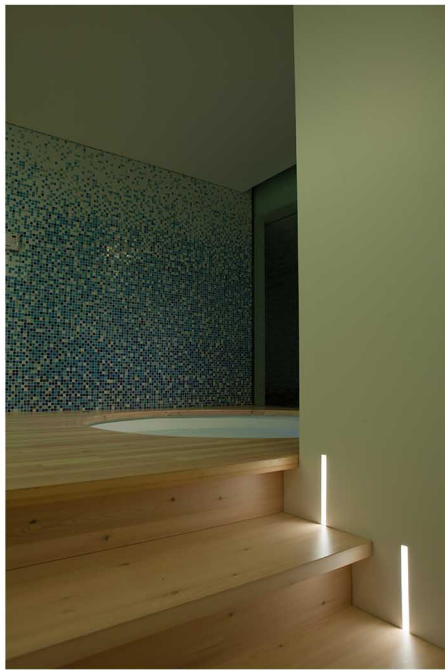
facade elevations



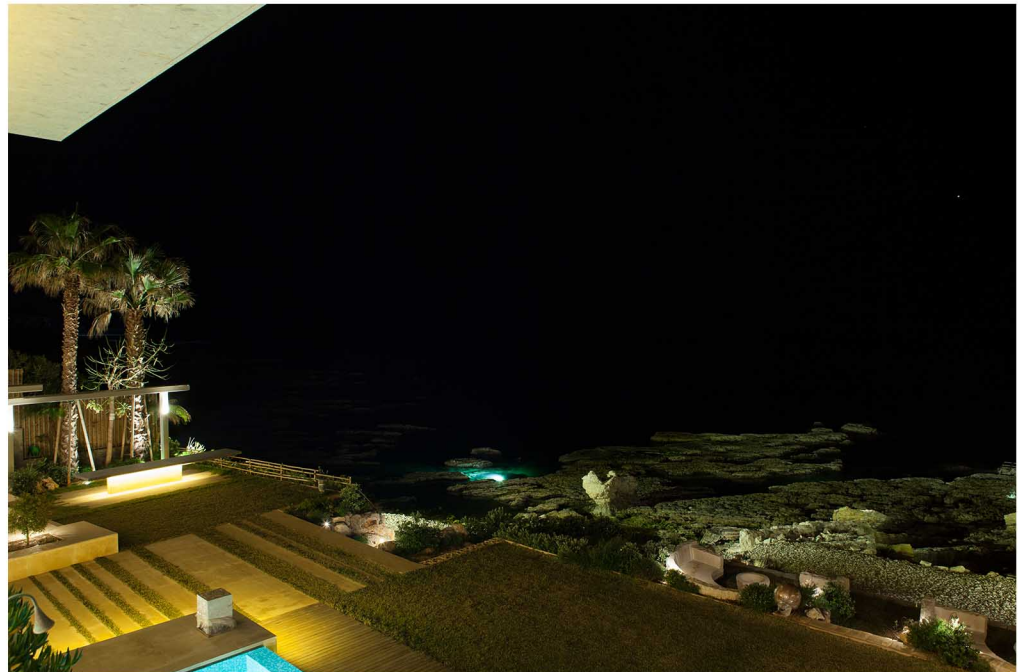
landscape lighting layout



**Title of work:** Villa Kali  
**Type of space:** Beach House  
**Location of work:** Monsef, Lebanon  
**Year:** 2017  
**Scope:** Interior, Landscape and Façade Lighting  
**Consultant:** Blankpage Architects + Karim Nader

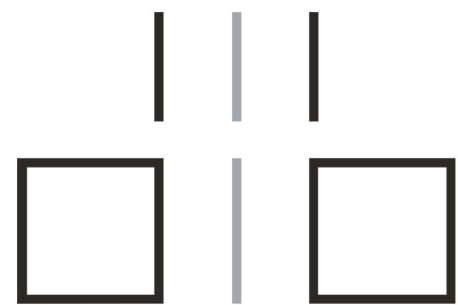


completed interior pictures



completed exterior & facade pictures





L I G H T I N G

# LIST OF PROJECTS

## some of the projects we have worked on are:

Millenium Hotel	UAE 2010
Souq Waqef Hotel	Qatar 2011
MEA Airline HQ	Lebanon 2011
Gym Saradar	Lebanon 2011
Boutique Hotel	Qatar 2012
Gold Souk	Qatar 2012
Al-Thani Villa	Qatar 2012
Librairie Antoine Flag Store, Solidaire	Lebanon 2012
Murjan Tower	KSA 2012
Raya plaza	Egypt 2013
Saudi Diyar consultants HQ	KSA 2013
Mecca apartments	KSA 2013
Sea View	Kuwait 2014
Miramar Beach resort	Lebanon 2014
Sea Through	Lebanon 2014
Mina 1394 Tower	Lebanon 2014
Kuwait Real Estate Company HQ Offices	Kuwait 2015
FB Holding HQ Offices	Lebanon 2015
Zwara - Sea View Restaurant	Kuwait 2015
The Port - Restaurant Complex	Kuwait 2015
The Maze Roof Top - Miramar Beach Resort	Lebanon 2015
Kuwait Parliament	Kuwait 2015
Universal Watch HQ Offices	Kuwait 2015
Ferrum Tower	Lebanon 2015
Oman Air VIP Lounge - Sallalah	Oman 2015
Shaheed Park	Kuwait 2016
Al Andalous Multi Use Complex	Kuwait 2016
The Loft - Crystal Tower	Kuwait 2017
St-Elie Church	Lebanon 2017
Life with Cacao	Qatar 2017
Al Tujar Tower	Kuwait 2017
Villa Kali	Lebanon 2017
Peristyle - Crystal Tower	Kuwait 2018
Vibes Restaurant Complex	Kuwait 2018
Di.Spa	Lebanon 2018
First Avenue Commercial Complex	UAE 2018
The Oranger Hotel	Tunisia 2019
Al Ashira	Kuwait 2019
Sofoh Villa Complex	UAE 2019